



CITY OF MEMPHIS

REQUEST FOR PROPOSAL

CONSTRUCTION MANAGER AT-RISK

#52417

New Gaisman Community Center

Addendum #3

ADDENDUM NO. 3

November 9, 2021

This Addendum forms a part of the Contract Documents and modifies the RFP dated October 19, 2021.

This Addendum consists of (28) pages.

I. MODIFICATIONS/CLARIFICATIONS TO THE CMAR RFP

1. Attached are LRK's 100% Schematic Design Drawings for Gaisman Community Center, which replace the existing drawings in Exhibit 1

ATTACHMENTS

1. 100% SD Drawings dated 11.1.21



Schematic Design

Gaisman Community Center

Memphis, TN



November 01, 2021

Consultants

Landscape Architect:

Dolhoff Thomas Design Studio

Civil Engineer:

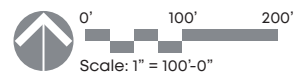
ABES Civil Engineering

Structural Engineer:

Jamnu Tahiliani & Associates

MEP Engineer:

Innovative Engineering Solutions

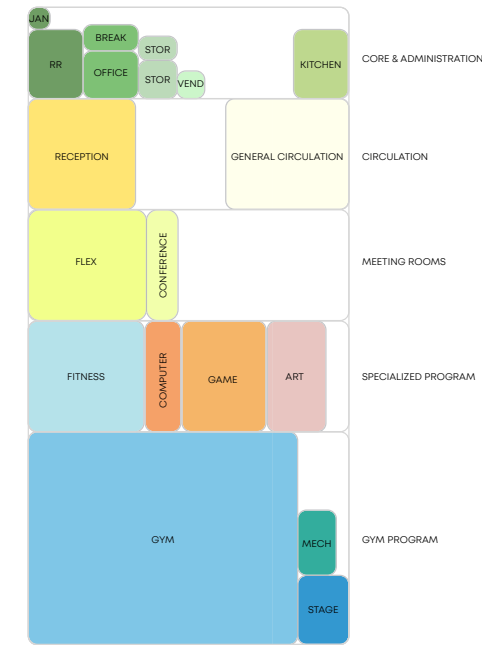
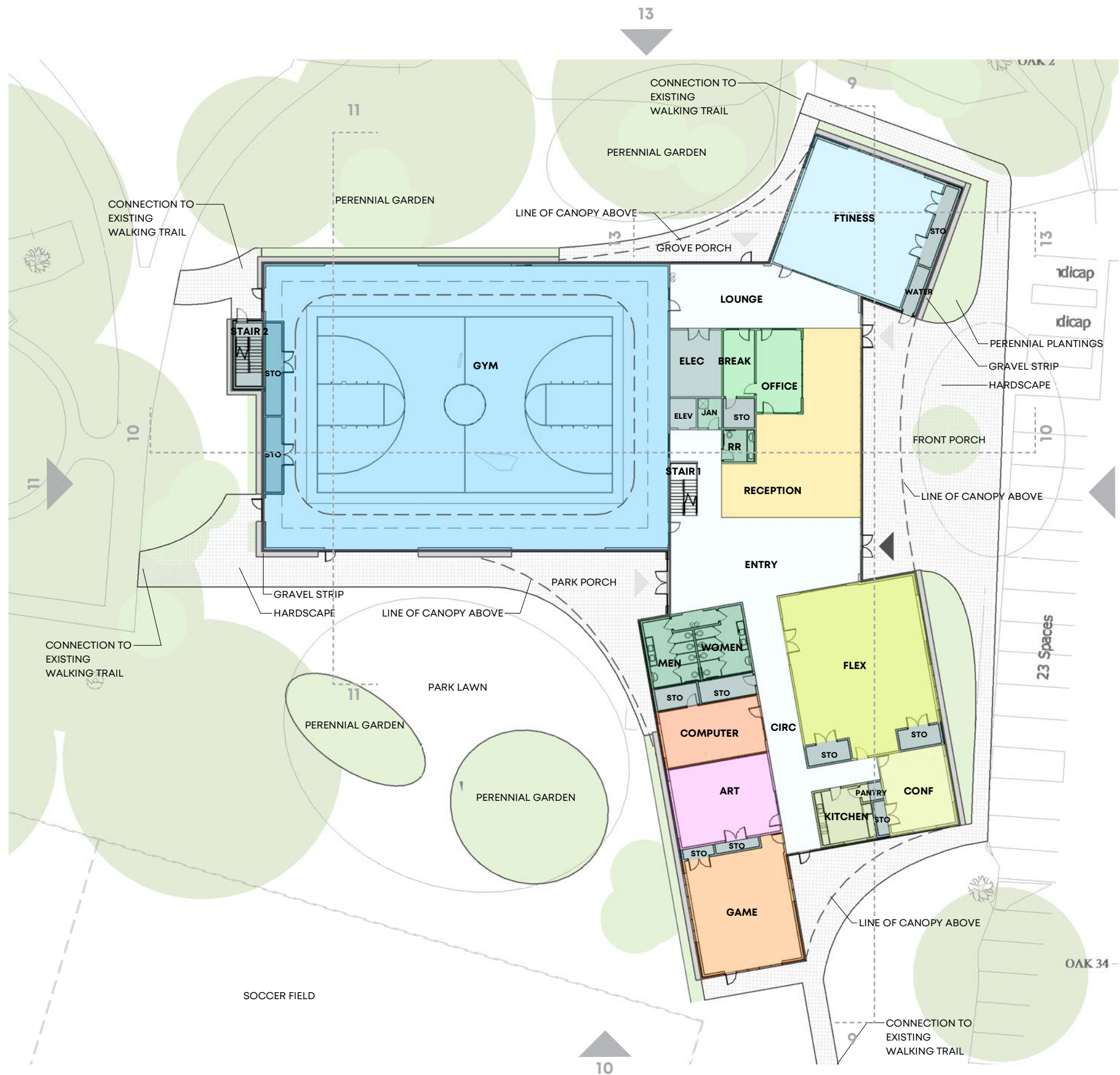


PROPOSED SCHEMATIC SITE PLAN WITH EXISTING BUILDING UNDERLAY



PROPOSED SCHEMATIC SITE PLAN



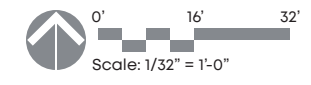
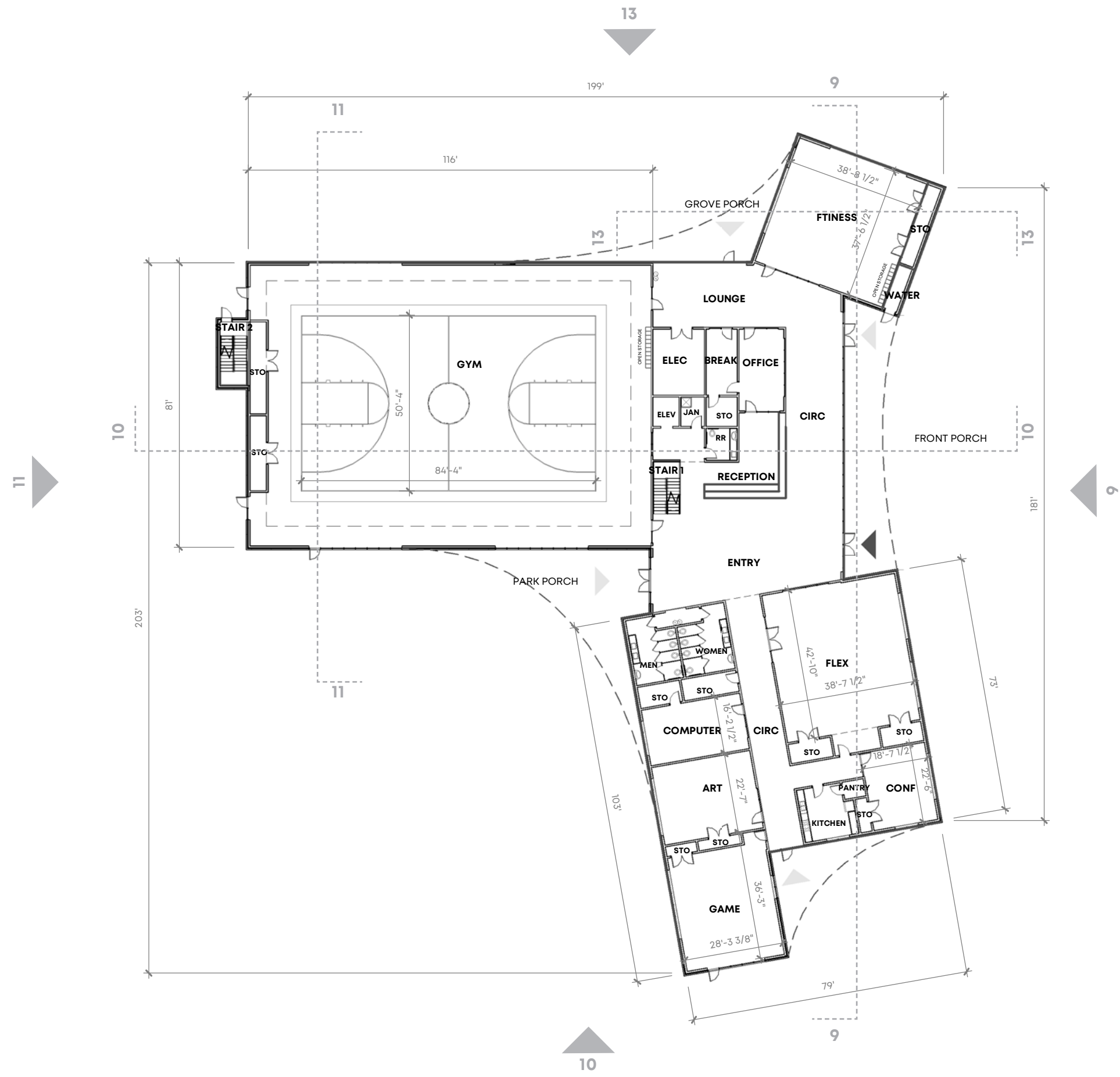


BASE PROGRAM KEY
NOT TO SCALE



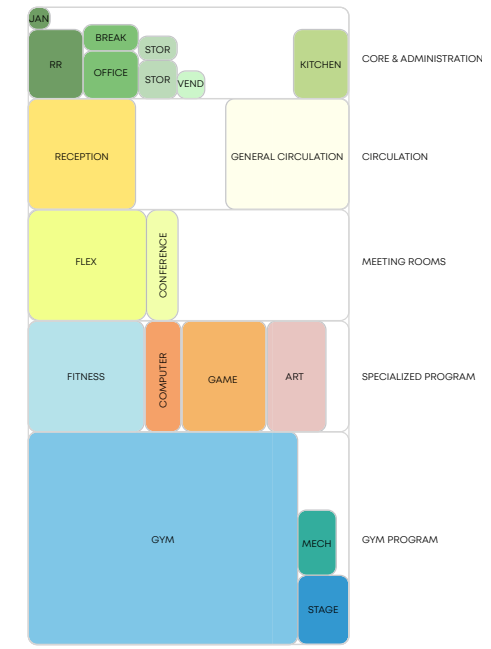
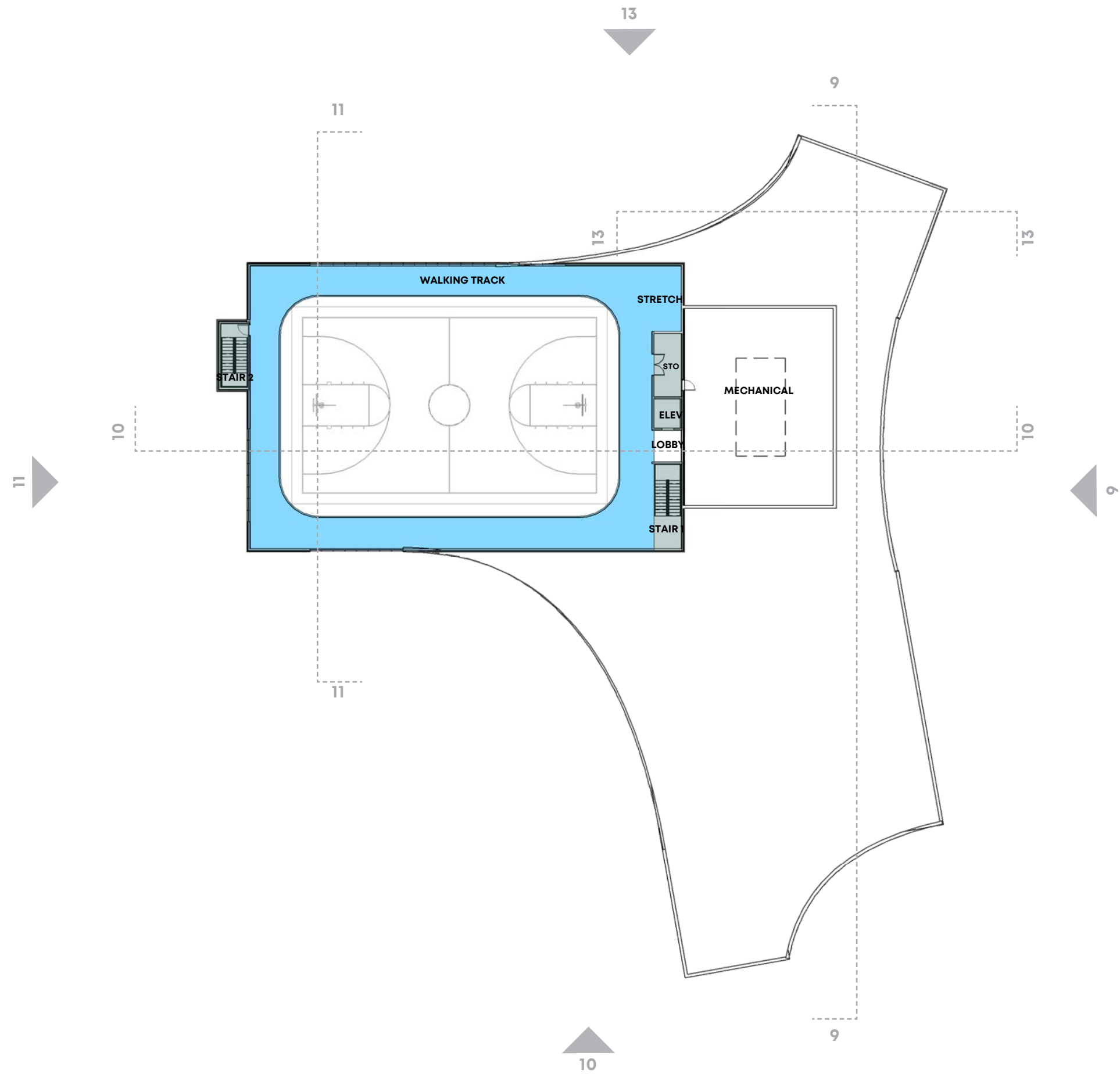
First Floor Plan - Annotation
Gaisman Community Center
Memphis, TN | 01.21046.00 | 11.01.21



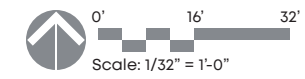


First Floor Plan - Dimensioned
 Gaisman Community Center
 Memphis, TN | 01.21046.00 | 11.01.21



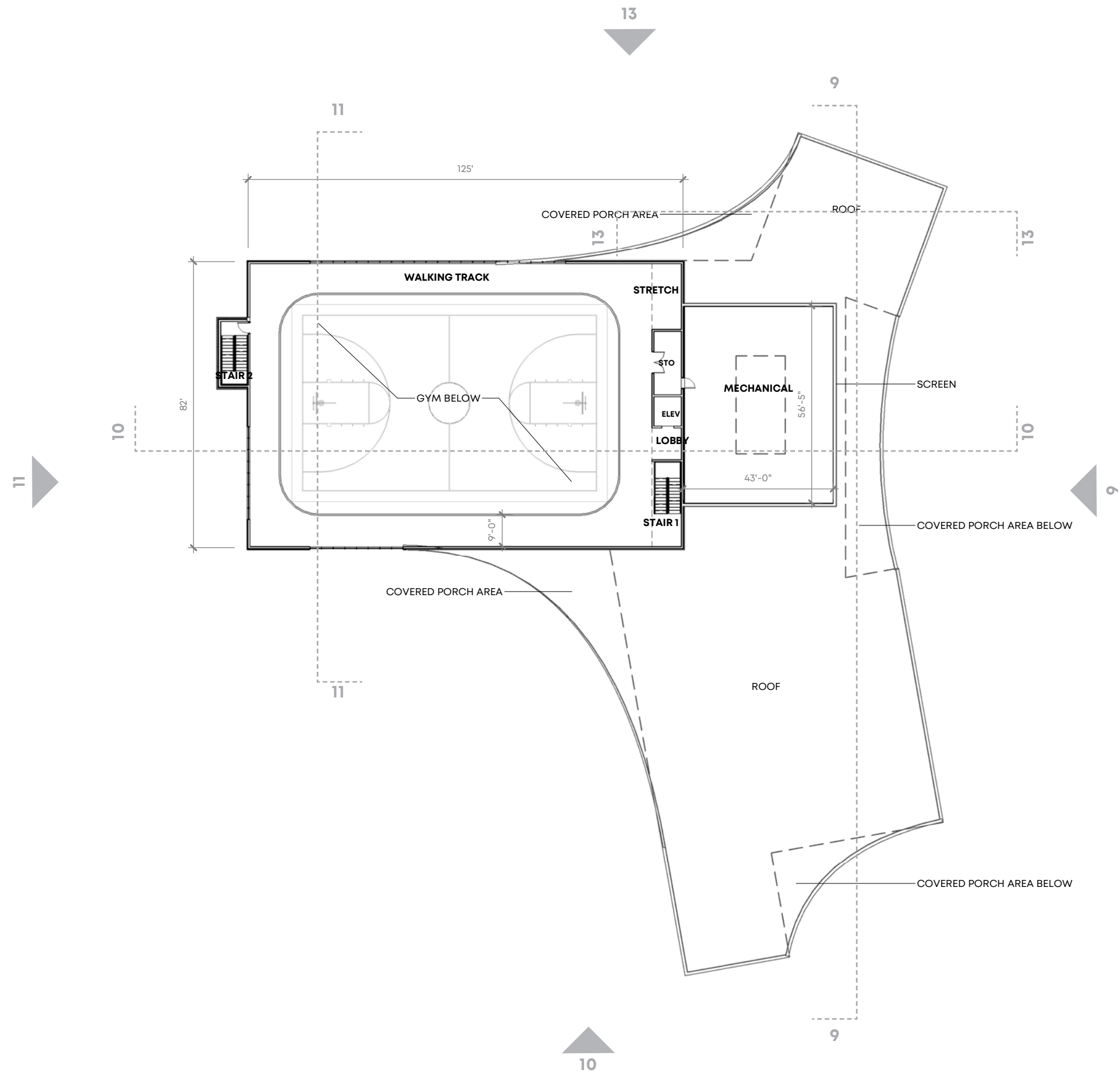


BASE PROGRAM KEY
NOT TO SCALE



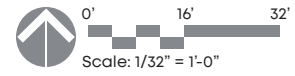
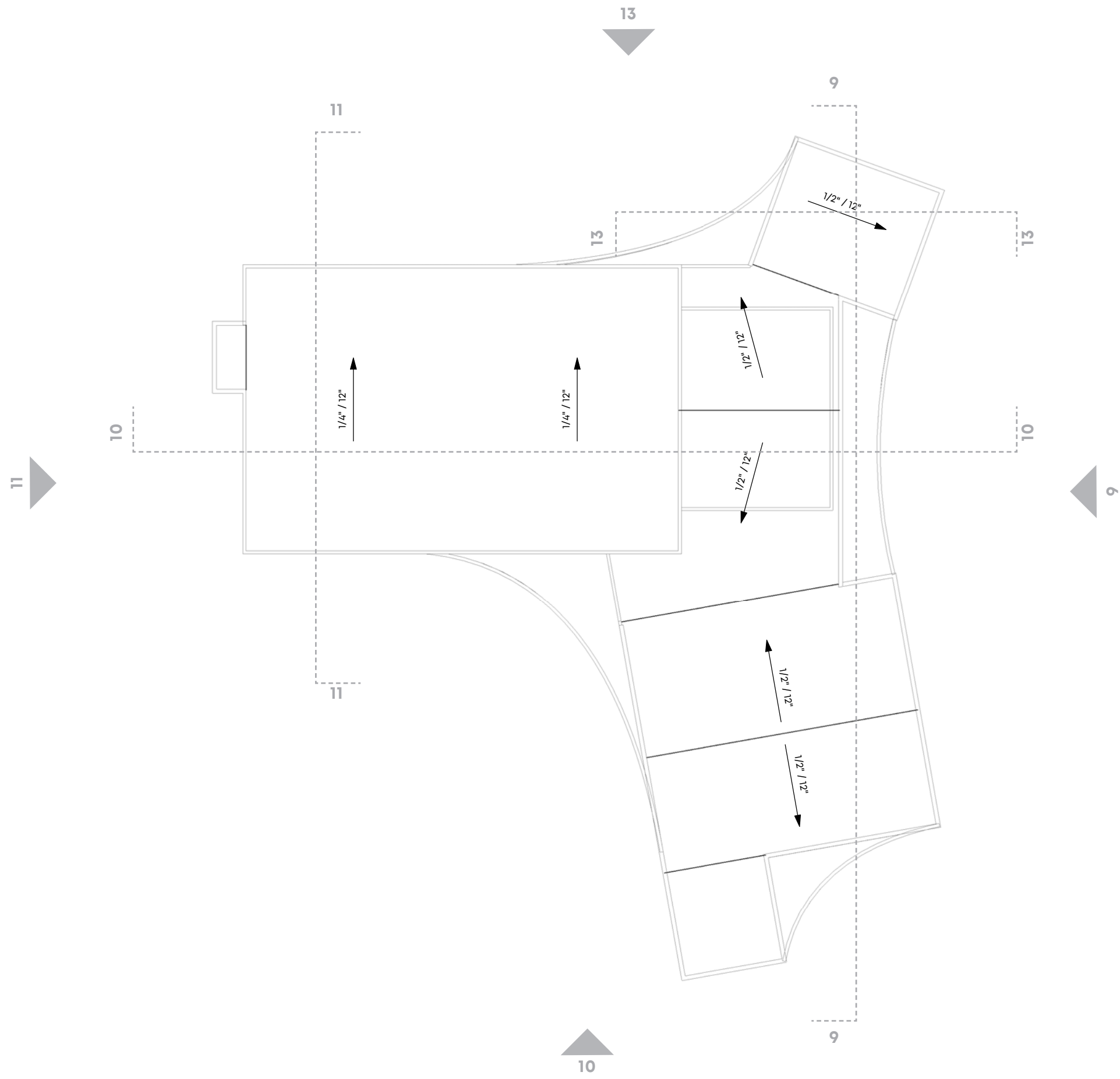
Second Floor Plan - Annotation
Gaisman Community Center
 Memphis, TN | 01.21046.00 | 11.01.21





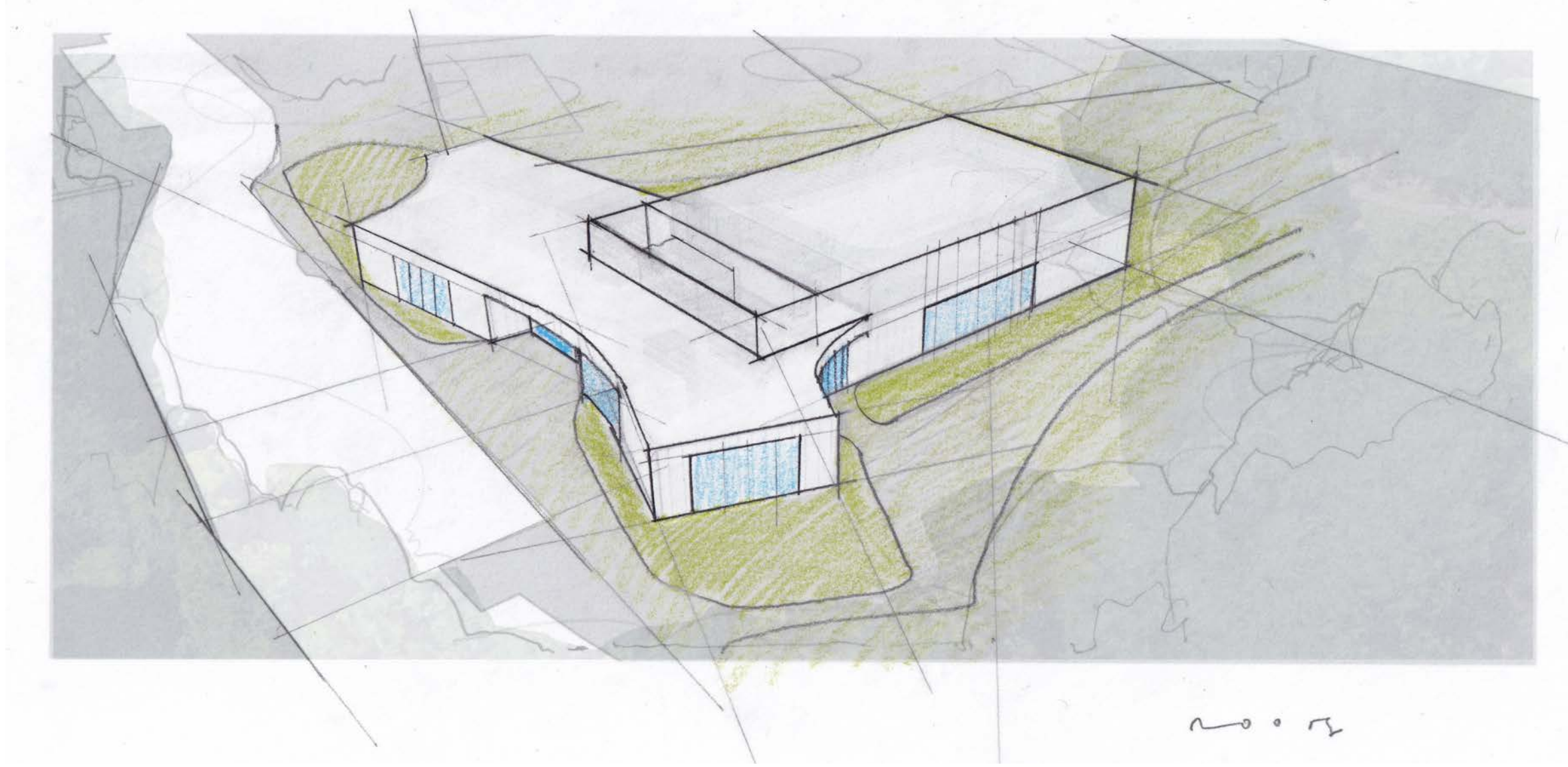
Second Floor Plan - Dimensioned
 Gaisman Community Center
 Memphis, TN | 01.21046.00 | 11.01.21





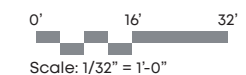
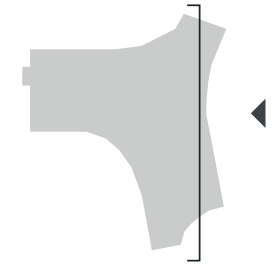
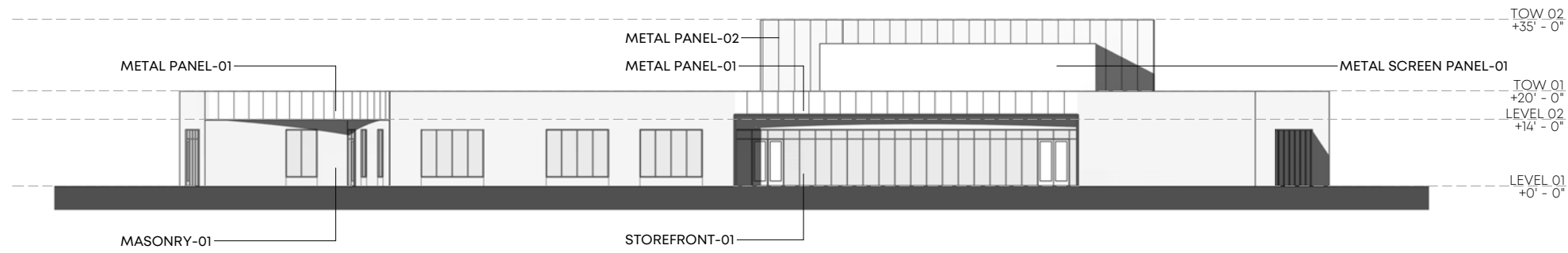
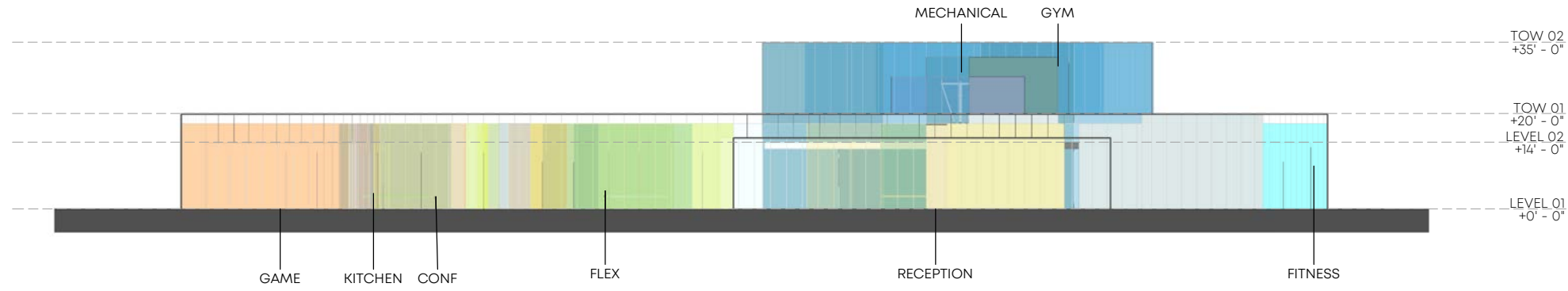
Roof Plan
Gaisman Community Center
Memphis, TN | 01.21046.00 | 11.01.21





3D MASSING
Gaisman Community Center
Memphis, TN | 01.21046.00 | 11.01.21





Massing / Elevation / Section - East

Gaisman Community Center

Memphis, TN | 01.21046.00 | 11.01.21

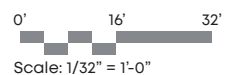
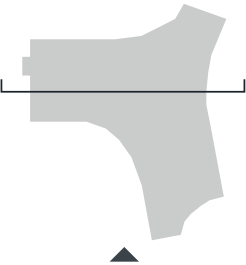
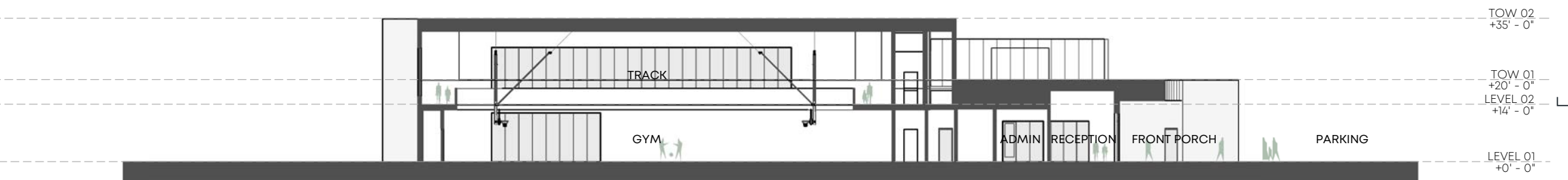
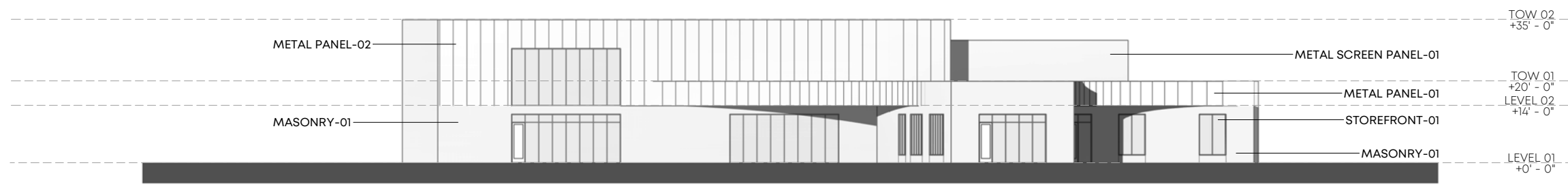
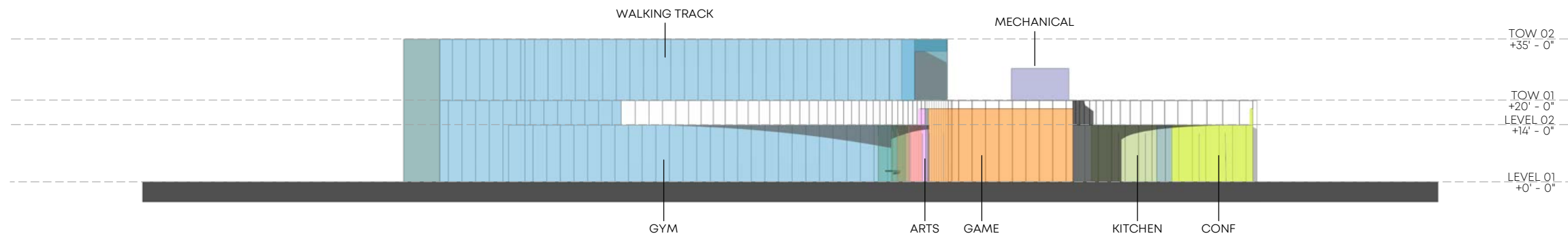


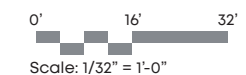
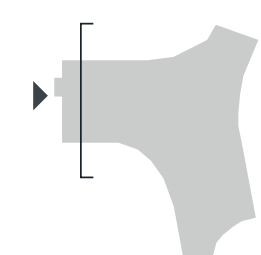
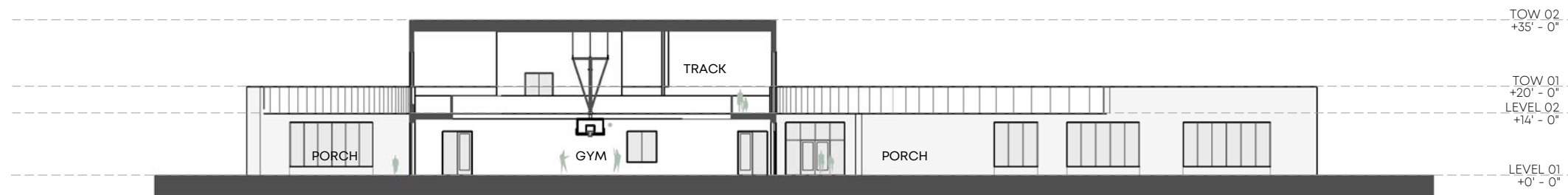
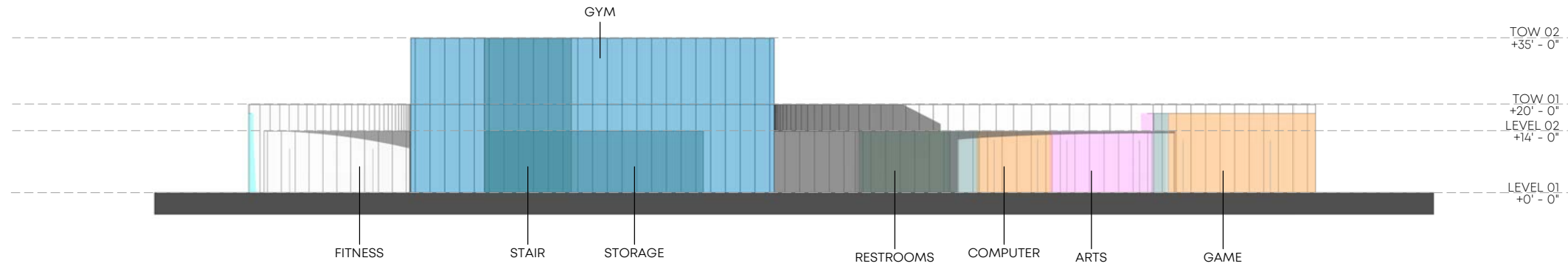


Massing / Elevation / Section - South

Gaisman Community Center

Memphis, TN | 01.21046.00 | 11.01.21



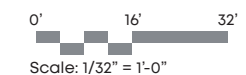
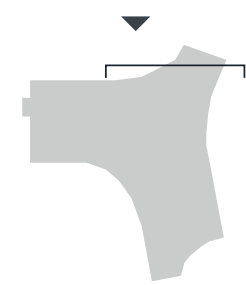
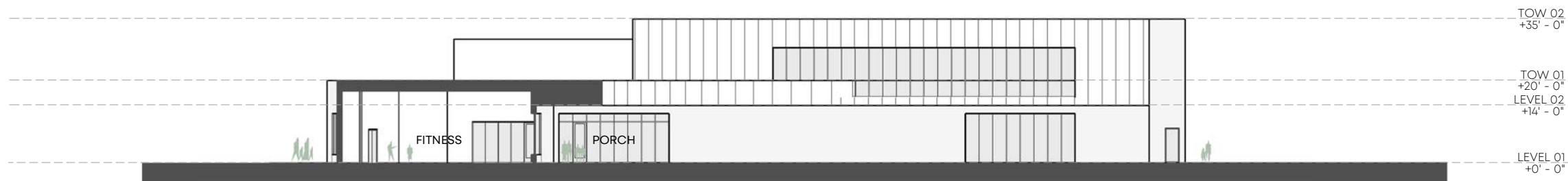
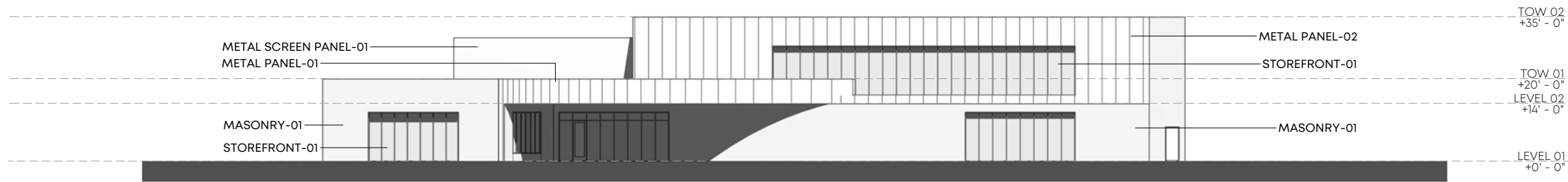
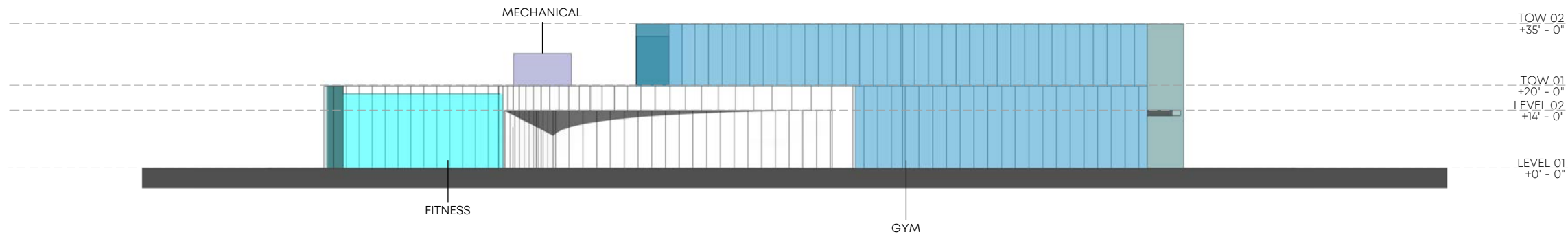


Massing / Elevation / Section - West

Gaisman Community Center

Memphis, TN | 01.21046.00 | 11.01.21



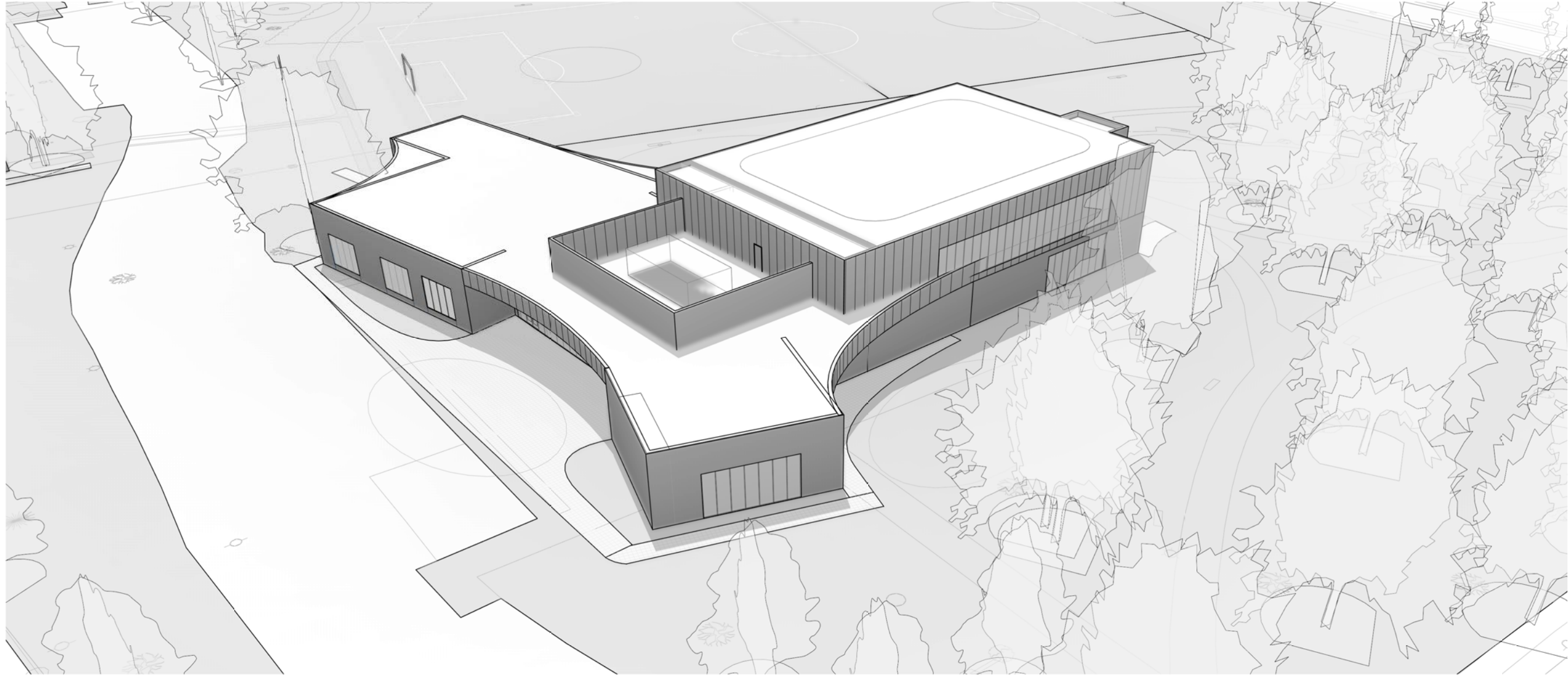


Massing / Elevation / Section - North

Gaisman Community Center

Memphis, TN | 01.21046.00 | 11.01.21





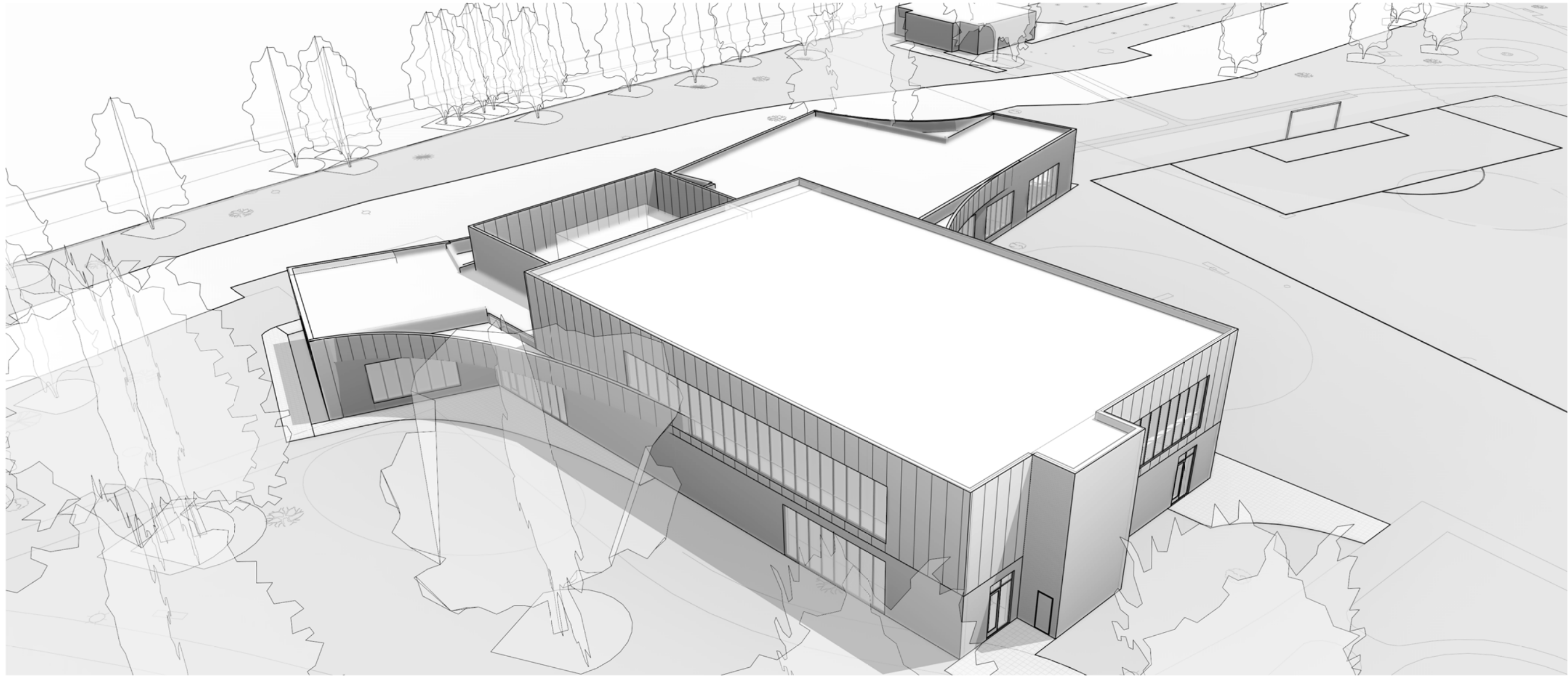
Aerial
Gaisman Community Center
Memphis, TN | 01.21046.00 | 11.01.21





Aerial
Gaisman Community Center
Memphis, TN | 01.21046.00 | 11.01.21





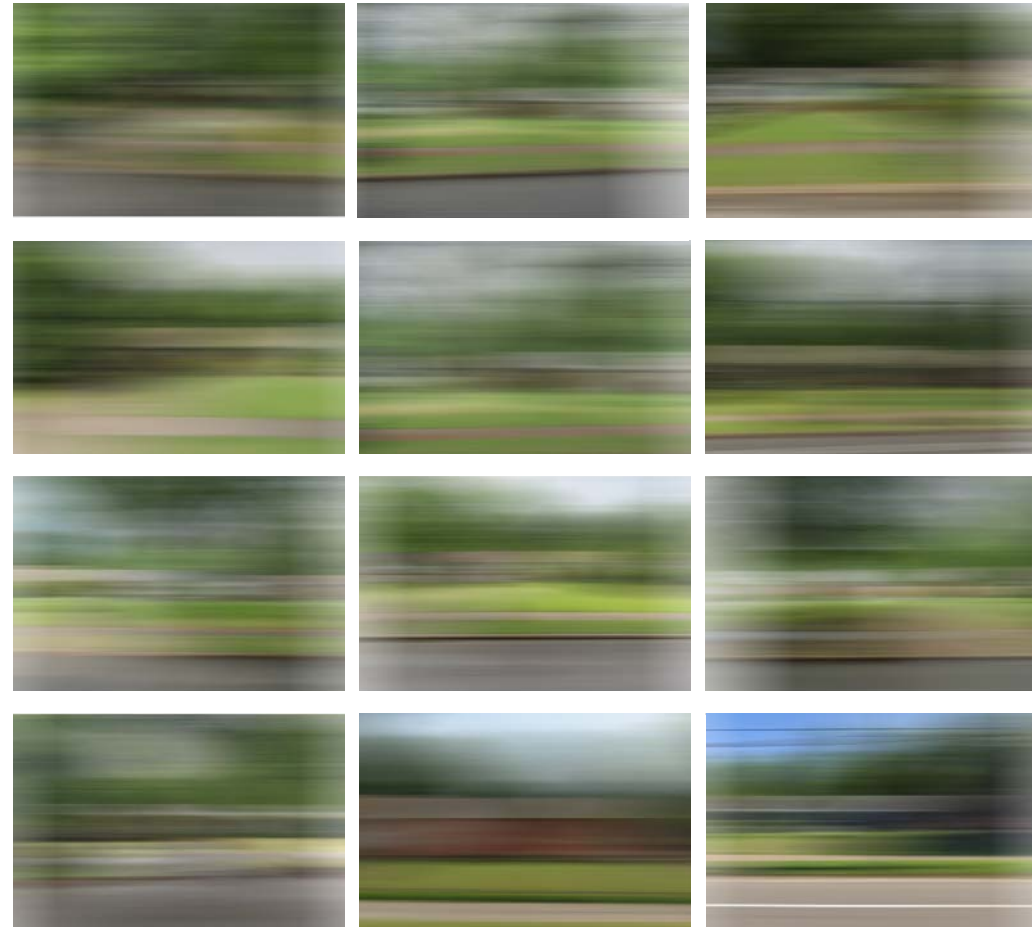
Aerial
Gaisman Community Center
Memphis, TN | 01.21046.00 | 11.01.21





Aerial
Gaisman Community Center
Memphis, TN | 01.21046.00 | 11.01.21





NEIGHBORHOOD COLOR SURVEY

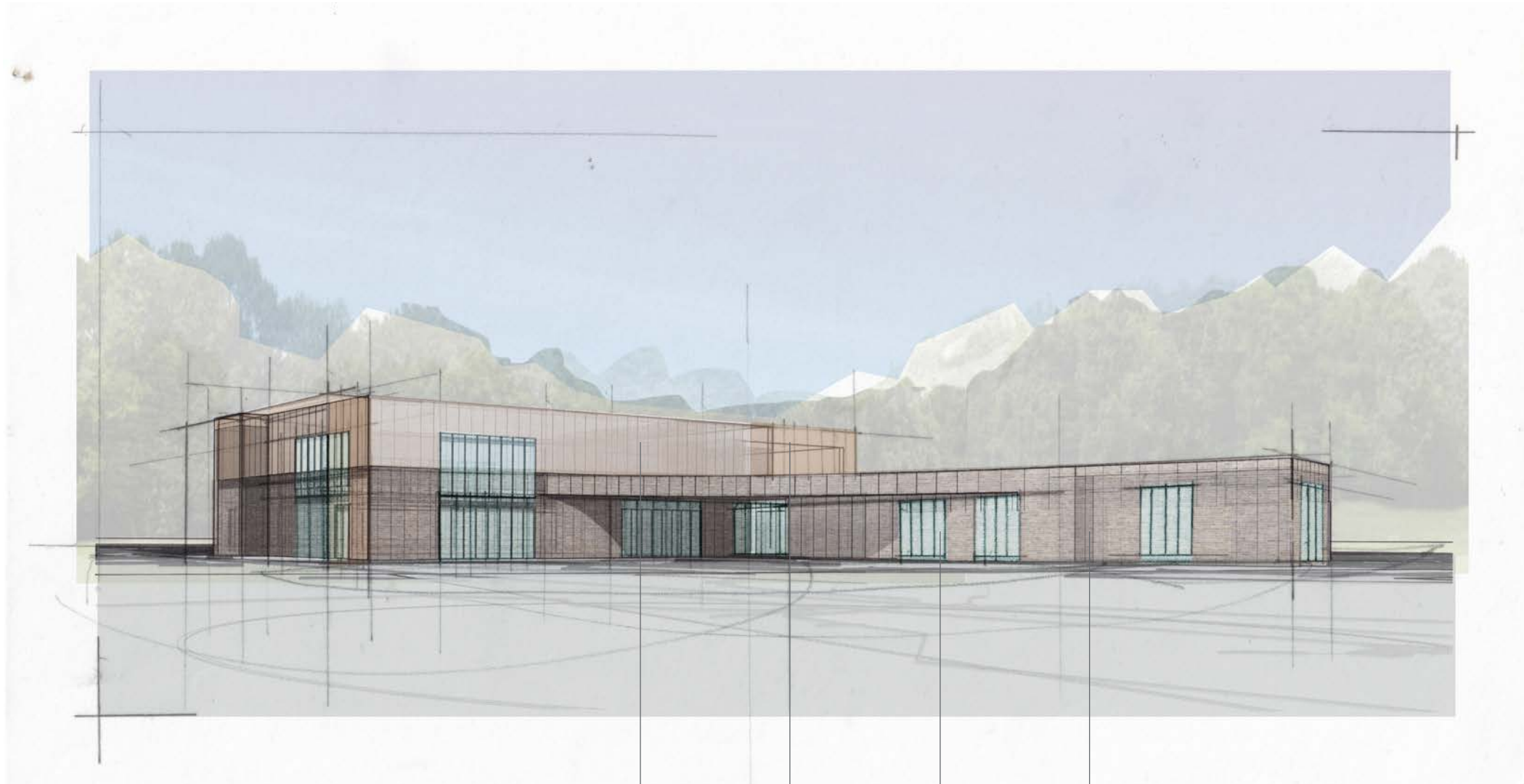


NEIGHBORHOOD COLOR PALETTE



Neighborhood Palette
 Gaisman Community Center
 Memphis, TN | 01.21046.00 | 11.01.21





Aluminum Metal Panel System



Perforated Aluminum Screen

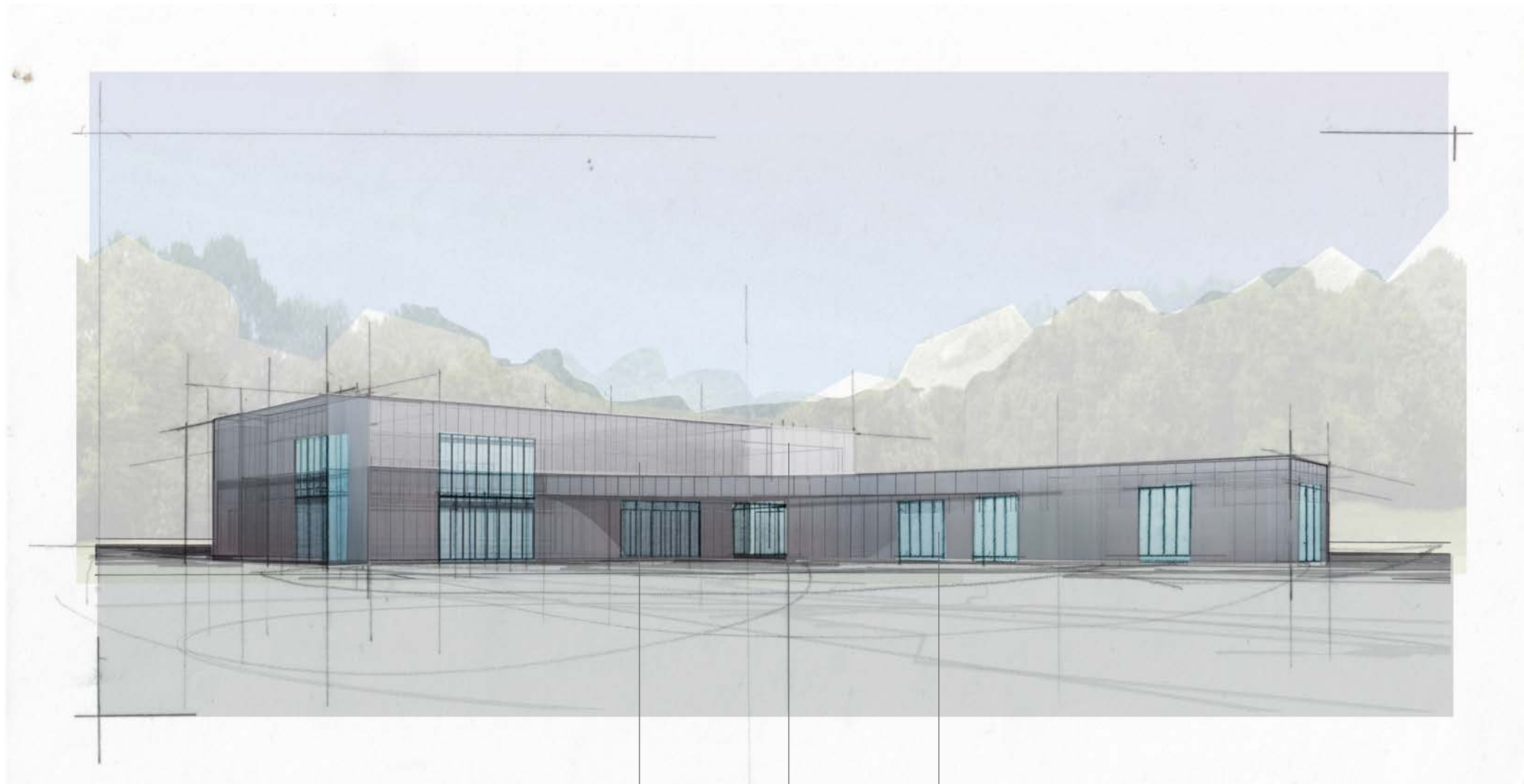


Aluminum Storefront System

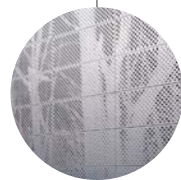


Masonry Veneer





Aluminum Metal Panel System



Perforated Aluminum Screen



Aluminum Storefront System

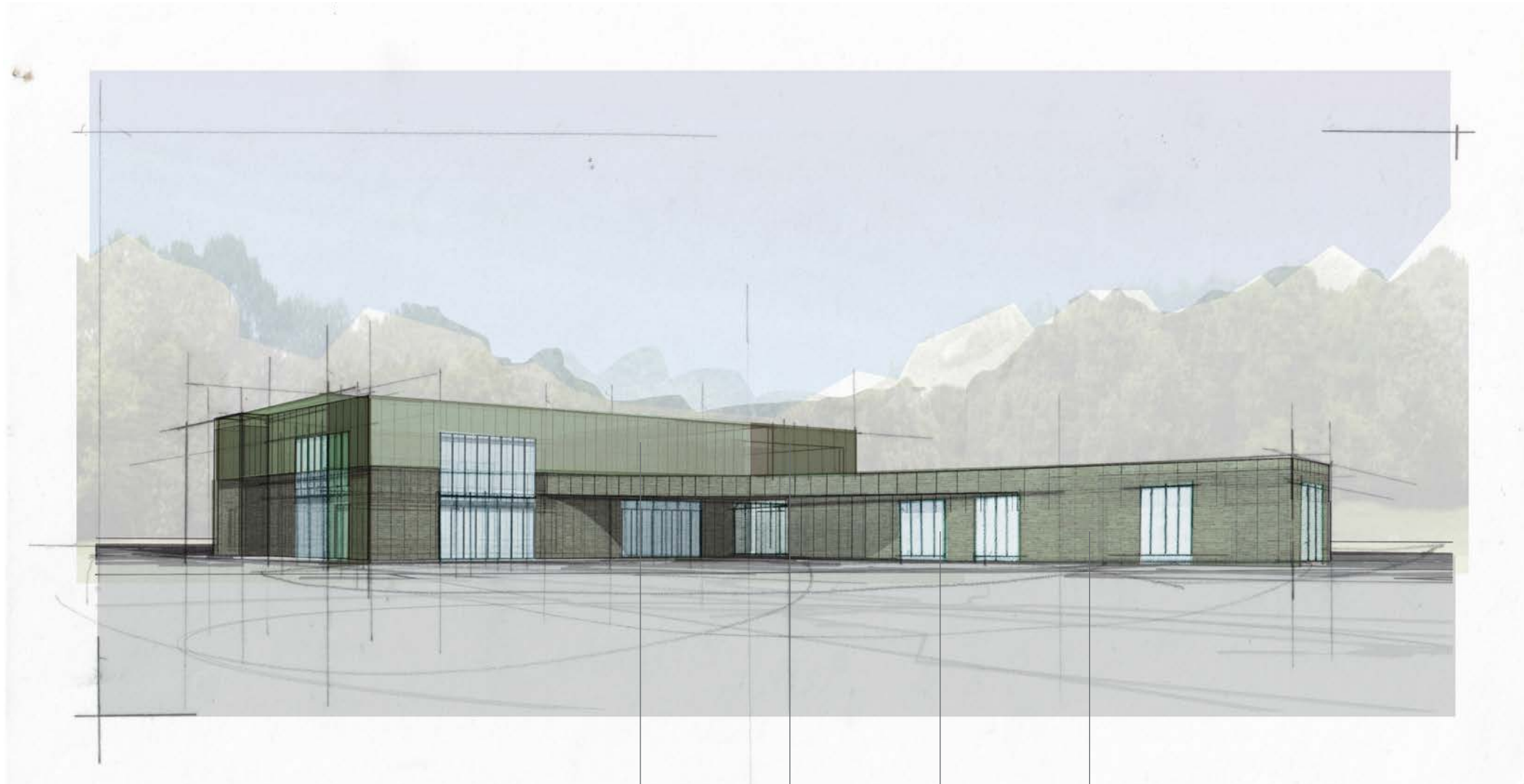


Material Studies - Fog

Gaisman Community Center

Memphis, TN | 01.21046.00 | 11.01.21





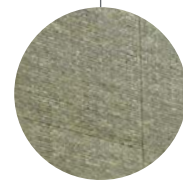
Aluminum Metal Panel System



Perforated Aluminum Screen



Aluminum Storefront System



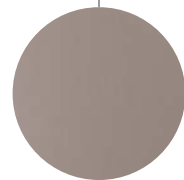
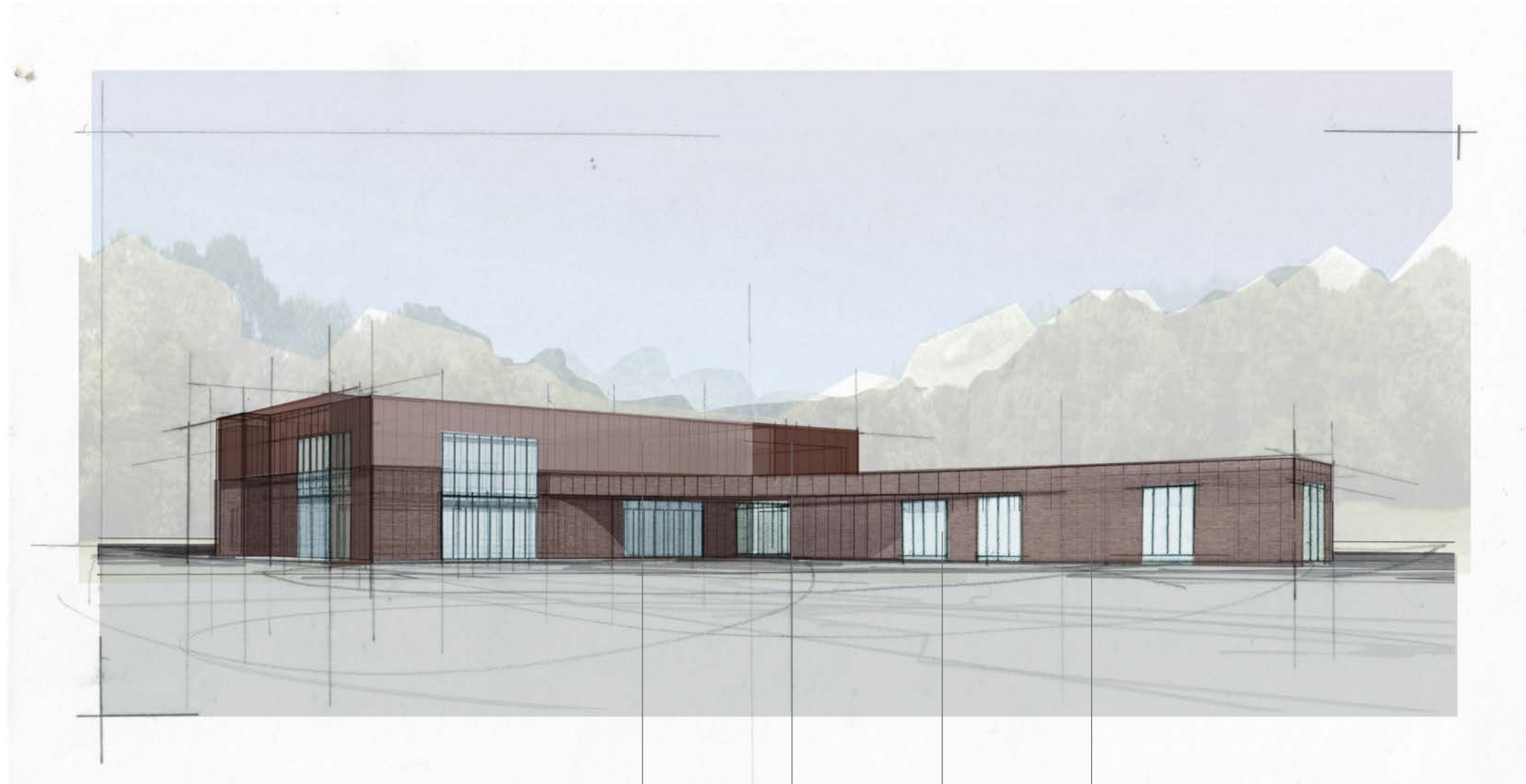
Masonry Veneer



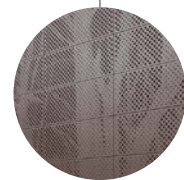
Material Studies - Moss
Gaisman Community Center

Memphis, TN | 01.21046.00 | 11.01.21





Aluminum Metal Panel System



Perforated Aluminum Screen



Aluminum Storefront System



Masonry Veneer





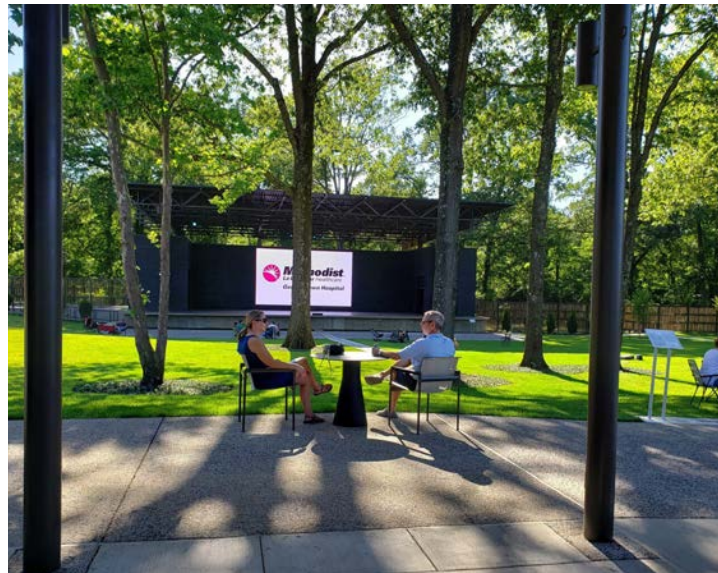
Form and Material References
Gaisman Community Center
Memphis, TN | 01.21046.00 | 11.01.21





Interior Precedents
Gaisman Community Center
Memphis, TN | 01.21046.00 | 11.01.21





Landscape Precedents
Gaisman Community Center
Memphis, TN | 01.21046.00 | 11.01.21





WILLIAM WALKER



ROMARE BEARDEN



GEE'S BEND QUILT

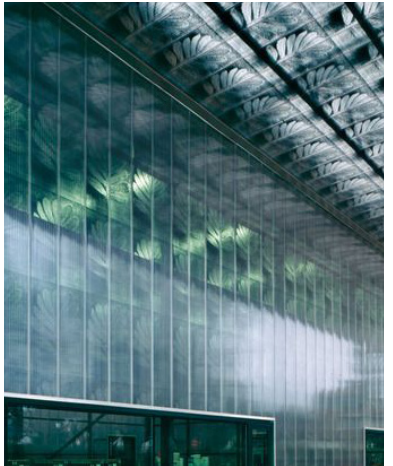


EDUARDO PAOLOZZI

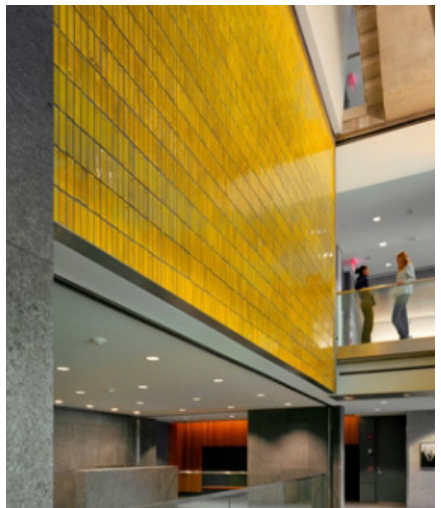
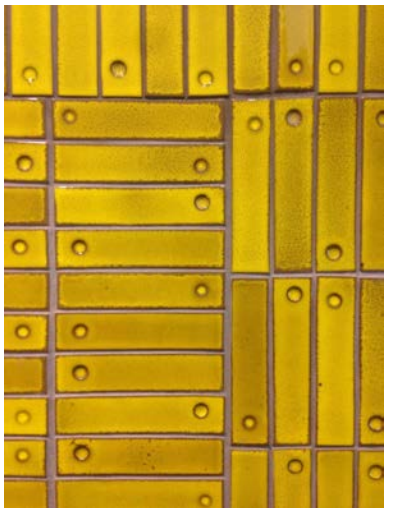


GEE'S BEND QUILT

CULTURAL COLOR AND TEXTURE

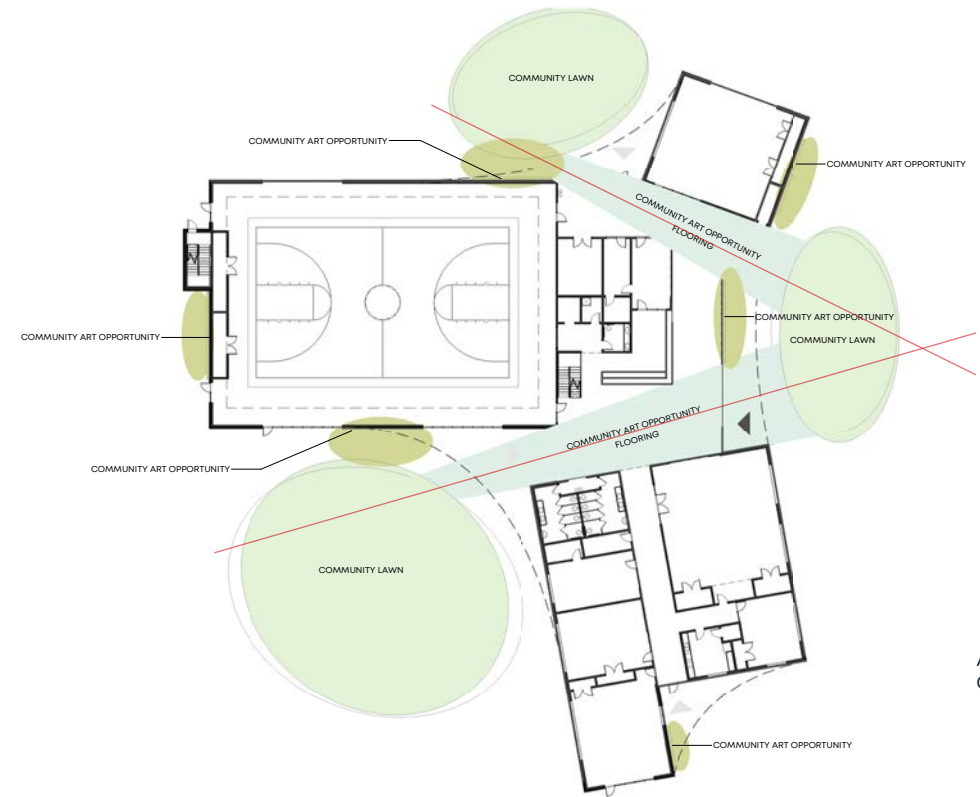


HERZOG AND DE MEURON - FACADE MOTIF



WILLIAMS AND TSIEN - GLAZED WALL

ART AS PART OF THE FABRIC OF THE BUILDING



ART OPPORTUNITES AND CONNECTION TO SITE



Art Integration
Gaisman Community Center
Memphis, TN | 01.21046.00 | 11.01.21



Schematic Design

Gaisman Community Center

Memphis, TN



November 01, 2021