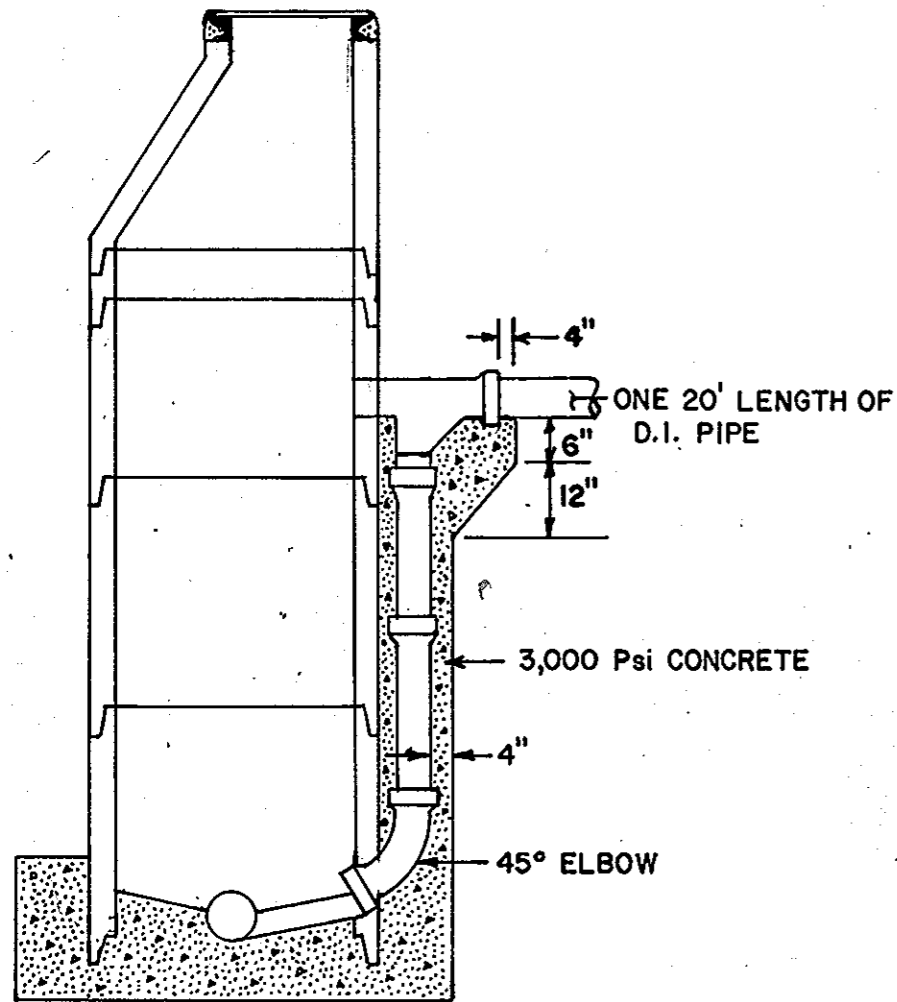
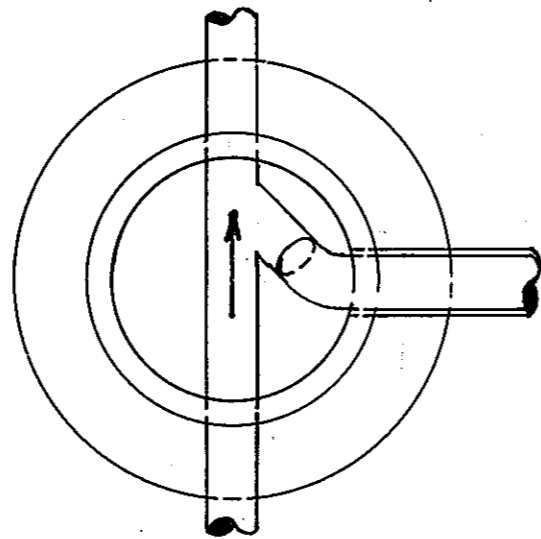
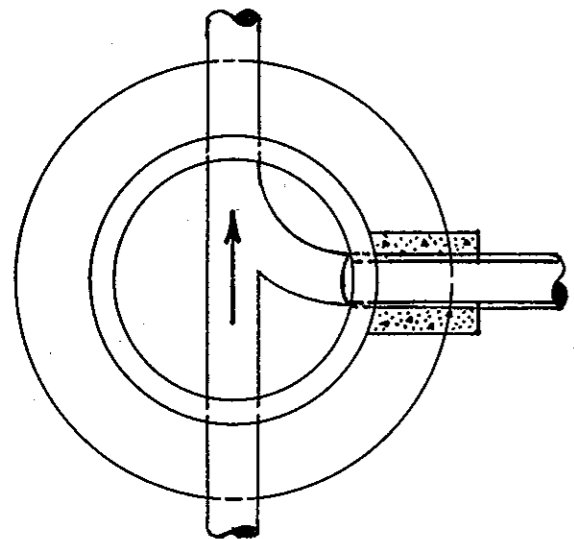
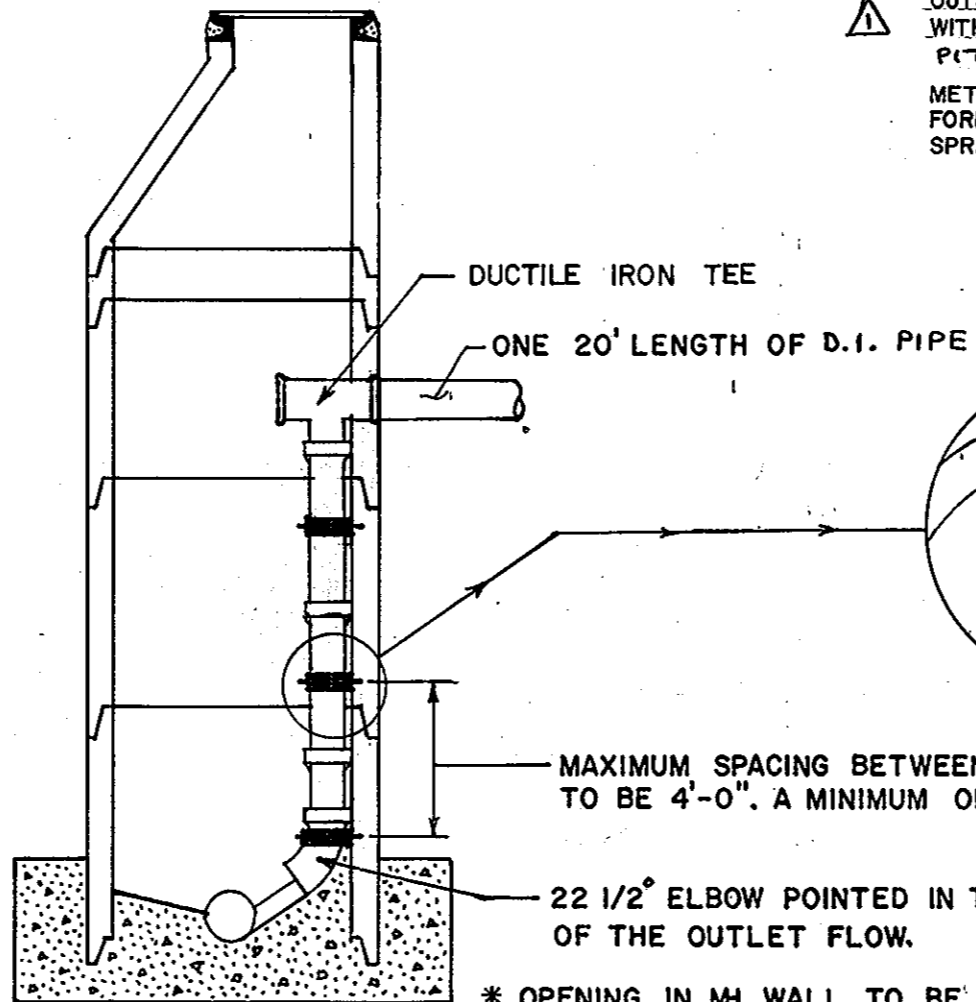


DIVISION OF PUBLIC WORKS BUREAU, ROBERT E. DAVIS, JR., BUREAU ENGINEER A.S.JR. DRAFTSMAN, DATE 11-77 SCALE NONE



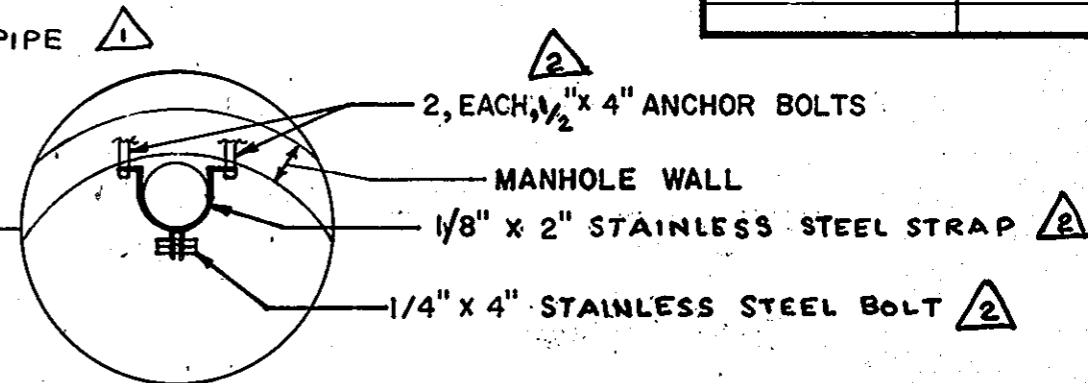
OUTSIDE DROP  
(SEE NOTE 1)



INSIDE DROP  
(SEE NOTE 2)

MH COATING NOTE:

⚠ OUTSIDE COATING OF MANHOLE SHALL BE WITH ASPHALTIC BLACK, OR COAL TAR PITCH PER SPEC.  
METHOD OF APPLICATION SHALL BE PERFORMED BY BRUSH OR BY LOW PRESSURE SPRAYER.



MAXIMUM SPACING BETWEEN STEEL STRAPS TO BE 4'-0". A MINIMUM OF 3 STRAPS ARE REQUIRED.

\* OPENING IN MH WALL TO BE GROUTED WITH HIGH STRENGTH, QUICK SETTING, NON-SHRINKING CEMENT GROUT.

- NOTES:  
1. TO BE USED, WHERE REQUIRED, ON NEW MANHOLES  
2. TO BE USED ON ALL EXISTING MH'S, WHERE REQUIRED

REVISIONS			
NO.	DATE	BY	REMARKS
△	8/18/10		REVISED TEXT
△	6/30/16		REVISED TEXT

CONVERSIONS	
ENGLISH	METRIC

CITY OF MEMPHIS  
DIVISION OF PUBLIC WORKS

**DESIGN STANDARD**  
FOR  
SANITARY MANHOLE  
DROP CONSTRUCTION

*Ray McNeal*  
PRINCIPAL CIVIL ENGR.      1-25-80  
DATE

*J. J. ...*  
DEPUTY DIR./CIVIL ENGR.      DATE

12-7-77      DWG. NO. SST-2