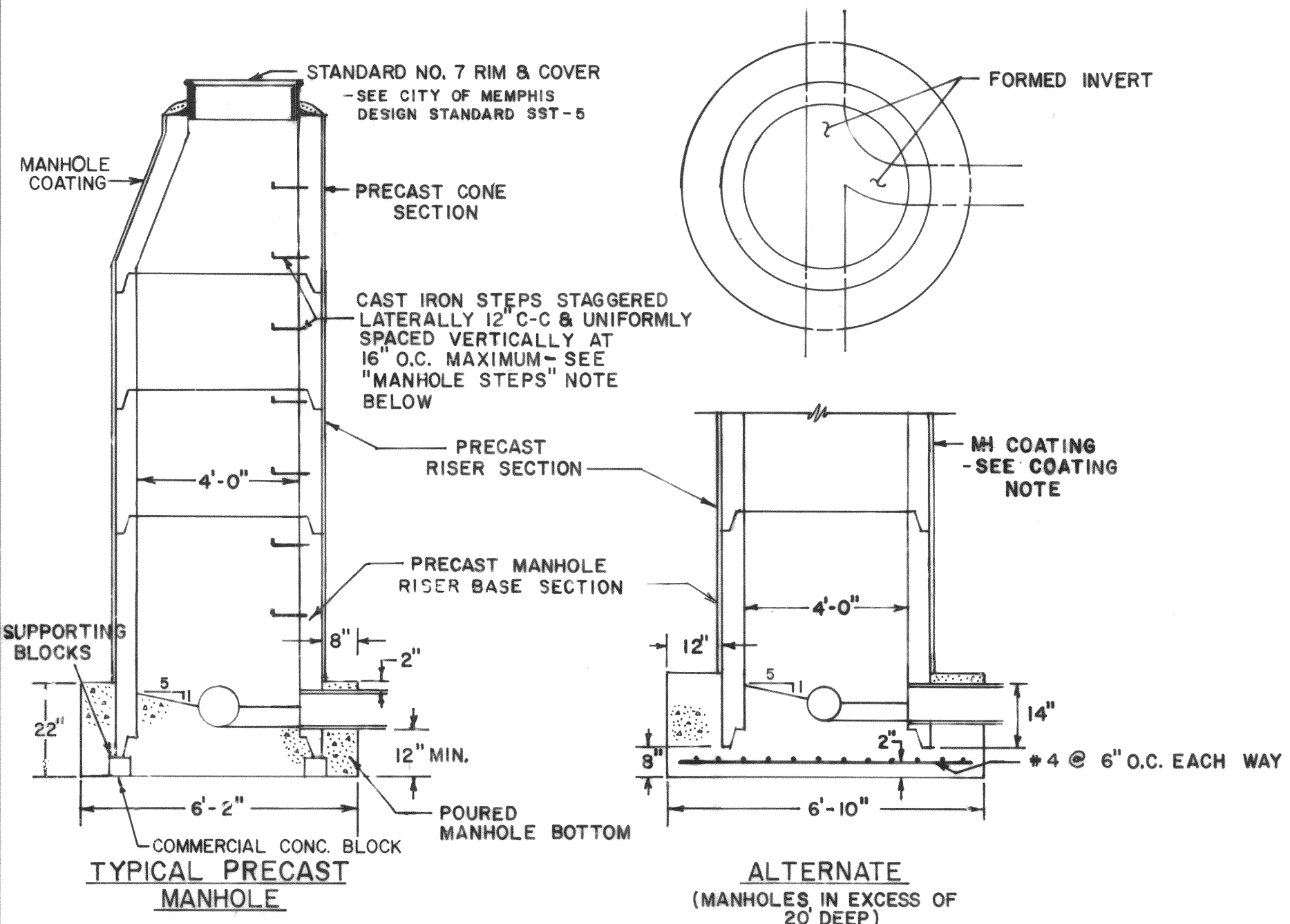


DIVISION OF PUBLIC WORKS BUREAU, ROBERT E. DAVIS, JR. BUREAU ENGINEER, A.S. JR. DRAFTSMAN, DATE 10-77 SCALE NONE



MH COATING NOTE :

OUTSIDE COATING OF MANHOLE SHALL BE WITH ASPHALTIC BLACK, AS AVAILABLE AT UNITED PAINT COMPANY.
METHOD OF APPLICATION SHALL BE PERFORMED BY BRUSH OR BY LOW PRESSURE SPRAYER.

REVISIONS			
NO.	DATE	BY	REMARKS

CONVERSIONS	
ENGLISH	METRIC

JOINT SEALANT: CONCRETE MORTAR SHALL BE USED TO SEAL JOINTS AFTER THE INSTALLATION OF AN APPROVED GASKET MATERIAL BETWEEN ALL PRECAST MANHOLE SECTIONS.

BASE SECTIONS: MANHOLE BOTTOM SHALL NOT BE POURED UNTIL PRECAST BASE SECTION OF MANHOLE AND PIPE STUBS OUT & IN ARE IN PLACE. PIPE STUBS OUTSIDE OF MANHOLE SHALL HAVE A MINIMUM LENGTH OF 12" AND A MAXIMUM LENGTH OF 15" FROM OUTSIDE OF MANHOLE TO THE FIRST JOINT OF PIPE. CONCRETE USED TO FORM BASES AND INVERTS SHALL BE 3,000 p.s.i.

SUBSTITUTES: POURED-IN-PLACE MANHOLES MAY BE SUBSTITUTED FOR PRECAST MANHOLES, PROVIDED A FORMAL, WRITTEN REQUEST HAS BEEN SUBMITTED TO & APPROVED BY THE ENGINEER OF DESIGN. ALL POURED-IN-PLACE MANHOLES SHALL CONFORM TO CITY OF MEMPHIS STANDARD DRAWINGS NO. SST-6 AND SST-7.

- MANHOLE STEPS:** THE FOLLOWING MANHOLE STEPS HAVE BEEN APPROVED FOR USE :
1. TOWER GROVE MH STEP NO. B-1096 BY TOWER GROVE FOUNDRY CO.
 2. M.A. MANHOLE STEPS BY M.A. INDUSTRIES, INC., EAST POINT, GA.
 3. WEDGE-LOK SAFETY STEP BY DELTA PIPE PRODUCTS, INC., ATLANTA, GA.

CITY OF MEMPHIS
DIVISION OF PUBLIC WORKS

DESIGN STANDARD
FOR *PCSAHMH*

**PRECAST
SANITARY MANHOLE**

<i>Ray Mason</i>	1-25-80
PRINCIPAL CIVIL ENGR.	DATE
<i>G. J. James</i>	1-25-80
DEPUTY DIR./ CIVIL ENGR.	DATE

JC 5756