

THE CITY OF MEMPHIS, TENNESSEE

Memphis is located on the east bank of the Mississippi River in the southwest corner of Tennessee. Memphis is the State's largest city and the county seat of Shelby County. The corporate limits contain 343 square miles, representing 45 percent of the total land area of Shelby County. Memphis ranks as the 18th largest city in the nation. The 2005 population was 646,356 according to the State of Tennessee Department of Economic and Community Development.

GOVERNMENTAL STRUCTURE

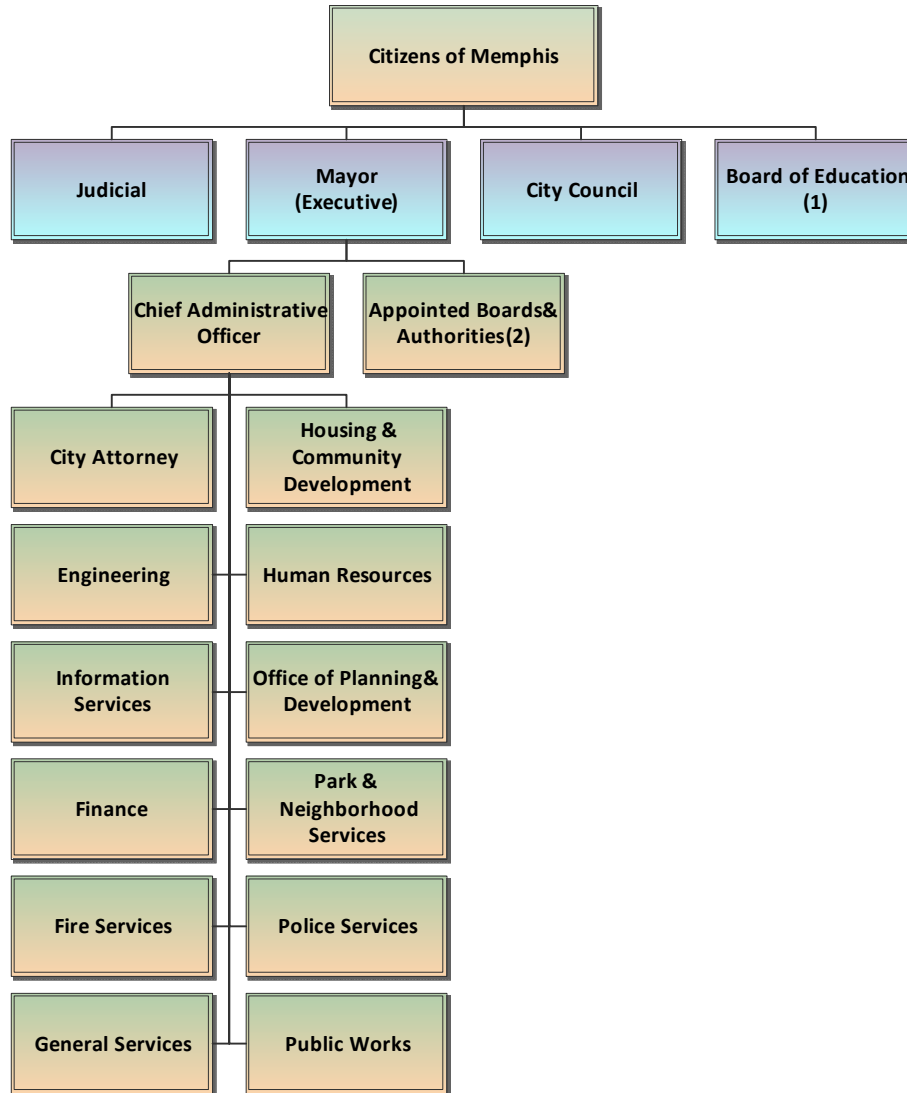
The City of Memphis was incorporated as a city in 1826. Memphis operated under a commission form of government from 1909 until January 1, 1968. At that time, a Mayor-Council form of government was established. The City Council is composed of thirteen representative citizens who are elected for four-year terms. Six council members are elected at large in multi-member districts, with territorial boundaries determined by dividing the City in half with each multi-member district consisting of three (3) council member numbered positions. The remaining seven (7) council members are elected by single member districts, numbered 1-7. The Council elects its own chairperson, exercises legislative powers, approves budgets and establishes the tax rate. The Mayor is elected to a four-year term. The Mayor carries out the policies of the City and appoints City board members, officers and division directors, with Council approval. The City's operating and service departments are organized under the Chief Administrative Officer and Chief Financial Officer who are appointed by and serve at the will and pleasure of the Mayor. The Mayor may veto action of the City Council, but a simple majority can override any veto.

The Chief Administrative Officer and Chief Financial Officer, under the direction of the Mayor, coordinate the activities of all administrative divisions of City government, acting as liaisons between the Mayor and all divisions, bureaus, boards, commissions and authorities. The directors of all divisions report to the Chief Officers on administrative procedures.

The major administrative divisions of the City include: Engineering; Executive; Finance; Fire Services; General Services; Information Services; Housing and Community Development; Legal; Parks and Neighborhoods; Human Resources; Police Services; Public Works/Sanitation; Public Services and Neighborhoods; and the Office of Planning and Development.

The Mayor is responsible for all city appointments to boards, which serve the City. These include the boards of the Memphis Light, Gas and Water Division (MLG&W); Memphis Area Transit Authority; Memphis Housing Authority; Center City Commission; Memphis & Shelby County Convention Center Complex; Memphis Brooks Museum of Art; Memphis & Shelby County Building Code Advisory Board; Memphis & Shelby County Public Library Board. The Mayor appoints five of the seven members of the Board of the Memphis & Shelby County Airport Authority. Most of the members of these boards are private citizens giving their time to the City without compensation.

CITY OF MEMPHIS, TENNESSEE ORGANIZATION CHART



(1) The Board of Education is legally separate from the City of Memphis primary government , and its budget is approved separately by the Memphis City Council .

(2) The Mayor makes appointments to Boards and Authorities whose budgets are separate but are related organizations, jointly owned or joint ventures. These Boards and Authorities include for example , the Memphis Area Transit Authority, Memphis Light, Gas & Water Division (including the Retirement and Pension Systems), Memphis & Shelby County Airport Authority, Memphis & Shelby County Convention Center, Memphis & Shelby County Building Code Advisory and the Center City Commission .

