

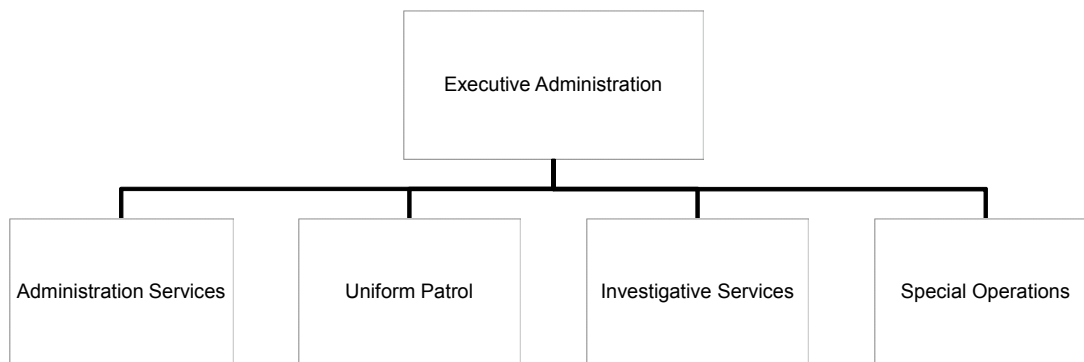
## ■ Operating Budget

Category	FY 2015 Actual	FY 2016 Adopted	FY 2016 Forecast	FY 2017 Adopted
Personnel Services	214,183,199	216,928,236	207,010,945	222,543,665
Materials and Supplies	19,921,023	28,741,383	29,116,000	28,139,046
Capital Outlay	5,584	0	(165,166)	492,094
Grants and Subsidies	0	0	25,200	150,000
Service Charges	5,803	0	6,416	0
Transfers Out	4,759,419	4,807,161	4,807,161	4,625,588
<b>Expenditures</b>	<b>238,875,028</b>	<b>250,476,779</b>	<b>240,800,555</b>	<b>255,950,394</b>
Program Revenues	(2,500,474)	(4,296,980)	(3,688,321)	(4,263,757)
<b>Net Expenditures</b>	<b>236,374,554</b>	<b>246,179,799</b>	<b>237,112,234</b>	<b>251,686,637</b>
Authorized Complement				2728

## Mission

To create and maintain public safety in the City of Memphis with focused attention on preventing and reducing crime, enforcing the law and apprehending criminals.

## Structure



## Services

The Police Division's primary responsibility is providing complete law enforcement services to the City of Memphis. The Division serves the citizens of the City of Memphis by performing law enforcement functions in a professional manner. The Division is ultimately responsible to the citizens. The Division's role is to enforce the law in a fair and impartial manner, recognizing both the statutory and judicial limitations of police authority and the constitutional rights of all persons. The Division's responsibilities include preventing and reducing crime, addressing illegal drug activity, solving crimes against persons and property, vigorously enforcing traffic laws by deploying specialized support units

such as Community Oriented Policing Services (COPS), Vice and Narcotics Unit, Canine, Harbor, Air Support, Mounted Patrol and Tactical Units when needed in addition to its uniform patrol units.

## Performance Highlights

Police Training Academy graduated 31 MPD Police Officers from the 119<sup>th</sup> Basic Recruit Session and six (6) Police Officers from the 32<sup>nd</sup> Regional-Lateral Session. The Training Academy also successfully launched a \$400,000 mass media campaign to attract qualified candidates to join the division's commissioned officers in their vigilant fight against crime.

The Real Time Crime Center reports the following highlights for the fiscal year:

- Released RFP for replacement of the Countywide Radio System.
- Reestablished the download of the statewide Motor Vehicle Registration Database for use in investigations.
- Completed installation of 400 in car video systems on June 23rd, 2016.
- Deployed 25 Body Worn Cameras in Crump Station.
- Hired 10 part time civilian video analysts.
- Established a forensic computer and cell phone lab at RTCC.
- Began project implementation of GPS bracelets for sexual assault offenders. Domestic violence offenders will be deployed beginning July 5th, 2016.
- With the increase in neighborhood donations for surveillance cameras, immediate results were achieved. As a result of camera donations by Hillview Apartments and the Belle Meade community, at least two felons have been arrested.

Grants Office successfully contracted to purchase a mobile command center with the assistance of matching dollars from the general fund.

Investigative Services reports the following accomplishments:

- Homicide investigators were able to clear 126 homicides, bringing the clearance rate to 78%, placing the bureau's clearance rate above the national average. The latest figures available from the FBI's 2013 UCR/NIBR's report shows that the national clearance rate for homicide is 64.8%, our investigators performed at a level which allowed us to exceed an established goal and remain above the national average for our homicide clearance rate.
- Sex Crimes bureau reports the following accomplishments for sexual assault kits testing, investigations and convictions. Testing: 687 Shipped, 970 Processed. Investigations: 163 Request for indictments completed against persons or DNA profiles: 110 Named suspects and 53 John Doe. Prosecution Results: 6 convictions.

- Grant and general fund dollars were combined to allow for the creation of 5 Domestic Violence Alert videos (Roll Call training videos) for statewide dissemination.

Organized Crime Unit reports the following accomplishments:

- Investigative Support Unit (ISU) conducted surveillances at a Memphis address. A consent to search was granted by the defendant to search his residence. Search warrants were obtained and executed at other locations frequented by the co-defendant. Detective recovered the following items: 1 Kilo of Cocaine, 1 ½ Ounces of Crack Cocaine, 4 vehicles (2014 GMC Sierra, 2012 GMC Sierra, 2004 Chevrolet Tahoe, and a 2004 Nissan Quest), 1 motorcycle (2009 Harley Davidson), \$217,930 in US Currency.
- ISU conducted surveillance at Chop Shop located at 4268 Elvis Presley. A search warrant was obtained for the property. Detectives recovered 8 stolen vehicles, 32 Briggs and Stratton Engines which had been stolen from an interstate shipment. The Chop Shop owner was also arrested.
- Pursuant to a search warrant served on a Memphis address, OCU seized the following items:
  - 1,640 bottles of Liquor
  - 8 Assault Weapons (Rifles)
  - 2 Tactical Shotguns
  - 3 Semi-Automatic Handguns
  - (2) 100 Round Magazines for Assault Weapons
  - 20 Assorted Loaded Magazines for Rifles and Handguns
  - 3,000 Rounds of Ammunition (Rifle, Shotgun, and Handgun)
  - 1 Bullet Resistant Vest
  - 9 Vehicles
  - \$516.75 in US Currency
- In February 1, 2016 –March 31, 2016, the Organized Crime Unit conducted a city-wide saturation targeting violent crimes. During the operation, the unit recovered 130 weapons (108 handguns and 20 long guns), 223 pounds of marijuana, 1118.00 grams of cocaine, various amounts of heroin, methamphetamine, and assorted pills. There were 394 Felony arrests, 424 Misdemeanor arrests, and 808 misdemeanor citations. At least 61 of the the arrest involved weapon related charges.
- In November 2015, The Memphis Police Department identified an increase of heroin overdoses and deaths throughout the City of Memphis. In a proactive approach to address the rising number of heroin deaths and overdoses, the Organized Crime Unit developed a task force that focused on the individuals who supplied heroin to the victims. In June 2016, the Organized Crime Unit indicted the first heroin overdose case in the history of the Memphis Police Department.

Special Operations' Crime Prevention's Community Outreach Programs (COP) emphasizes Intervention and Prevention Education. Program successes include the following:

- Graduated 153 citizens from the Citizen Police Academy.

- Graduated 50 clergy from the Clergy Police Academy.
- Graduated 30 Latino Citizens from the Hispanic Outreach Program Academy.
- Issued 300 coats purchased by Zach Randolph to students of Ford and Alcy Elementary Schools during annual coat drive; 400 backpacks with school supplies.
- 100 Youth participated in the “Outside the Box” Summer Boxing/Mentoring Program.
- 20 teams participated in the 2<sup>nd</sup> Annual Feed the Needy Bowling tournament fundraiser at the Winchester Bowling Center. The funds aided with the delivery of 2,000 Thanksgiving food baskets in the Annual Feed the Needy Initiative. COP Officers delivered at least 220 of those Thanksgiving food baskets to local residents throughout the Memphis Community.
- Sponsored Youth Crime Watch Conference with at least 400 students from 20 Shelby County Schools. These youth returned to their respective schools, identified the crime issues and with the assistance of counselors and COP, implemented educational programs and events as possible solutions.
- Handled over 478 Program Requests from schools, church groups, neighborhood watch groups and other community groups to speak on public and personal safety concerns.
- Organized and coached 160 high school youth who participated in the Annual Black History Knowledge Bowl Competition which was held at the National Civil Rights Museum.
- Partnered with Maximus Job/Fair and Workshop for 1000 participants.

Traffic/Special Operations brought back the Child Passenger Safety Program for the Department which had been dormant for several years. Officers assigned to Traffic, COPs and Uniform Patrol stations were trained as Child Passenger Safety Technicians. The officers were trained in the proper installation of child passenger seats, based on the age and size of each child. All workstations were equipped with a renewable supply of child seats to be distributed free of charge to the public.

## Issues & Trends

The Memphis Police Department is a multidimensional agency and one of the most progressive police departments in the nation. The enhancement of technology has given criminals a sophisticated avenue to conduct illegal activities. The City of Memphis has witnessed the presence of gangs. Fortunately, our community and civic leaders are cooperating with other agencies and organizations to create a plan to deal with this problem. A large urban society free from crime and disorder remains an unachieved ideal. Nevertheless, consistent with the values of a free society, it is the primary objective of the Memphis Police Department to, as closely as possible, approach that ideal.

## Key Performance Indicators

EXECUTIVE ADMINISTRATION	FY15 ACTUAL	FY16 GOAL	FY16 ACTUAL*	FY17 GOAL	CATEGORY
% of police recruits who completed academy training	76.4%	New measure	72..4%	75%	Public Safety
Turnover (% of sworn officers who voluntarily left the force)	8%	New measure	7%	5%	Public Safety
% of exit interviews completed	New measure	New measure	New measure	70%	Public Safety

SUPPORT SERVICES	FY15 ACTUAL	FY16 GOAL	FY16 ACTUAL*	FY17 GOAL	CATEGORY
% of incoming calls answered within 20 seconds	51.3%	70%	52.4%	80%	Public Safety
% of patrol officers trained as fingerprint technicians	4.54%	Tracking	4.72%	6.00%	Public Safety
Number of Crime Stoppers tips that result in arrests	294	300 (2% increase)	299	350	Public Safety

PRECINCTS	FY15 ACTUAL	FY16 GOAL	FY16 ACTUAL*	FY17 GOAL	CATEGORY
Part I <b>violent</b> crime rate (incidents per 100,000 population)	New measure	New measure	New measure	1% decrease**	Public Safety
Part I <b>violent</b> crime incidents (#)	7,855	Tracking	6,732	Tracking	Public Safety
Part I <b>property</b> crime rate (incidents per 100,000 population)	New measure	New measure	New measure	2% decrease**	Public Safety
Part I <b>property</b> crime incidents (#)	19,263	Tracking	15,219	Tracking	Public Safety
Total Part I crime incidents (#)	46,932	Tracking	37,537	44,593	Public Safety
Number of arrests of youth gun offenders (age 16-24)	1,031	New measure	957	1,100	Public Safety
Number of city-wide gun recoveries	2,493	2555 (2.5% increase)	2,279	2,600	Public Safety

INVESTIGATIVE SERVICES	FY15 ACTUAL	FY16 GOAL	FY16 ACTUAL*	FY17 GOAL	CATEGORY
Clearance rates for violent Blue Crush crimes	32.26%	34.26% (2% increase)	31.70%	33.00%	Public Safety
Clearance rates for property-related Blue Crush crimes	8.22%	10.22% (2% increase)	8.48%	8.70%	Public Safety

SPECIAL OPERATIONS	FY15 ACTUAL	FY16 GOAL	FY16 ACTUAL*	FY17 GOAL	CATEGORY
Number of traffic and DUI saturations conducted	361	368 (2% increase)	153	187	Public Safety
Number of community awareness/ education programs conducted by C.O.P.	311	327 (2% increase)	706	510	Public Safety

\* Some figures are approximate. In these cases, the reporting for FY15 was not complete before production of the budget book.

\*\* Crime reduction goals are calendar year goals.

## Police Services Division Detail

Category	FY 2015 Actual	FY 2016 Adopted	FY 2016 Forecast	FY 2017 Adopted
<b><u>Personnel Services</u></b>				
Full-Time Salaries	115,771,764	147,664,421	111,041,753	148,414,012
Holiday Salary Full Time	586,256	0	659,318	0
Vacation Leave	8,793,217	0	9,570,206	0
Bonus Leave	1,397,448	0	1,336,878	0
Sick Leave	7,279,806	0	6,541,884	0
Overtime	14,325,313	12,030,013	18,123,869	16,381,553
Holiday Fire/Police	6,457,683	6,532,035	6,055,139	6,056,061
Out of Rank Pay	742,571	697,033	837,370	682,710
Hazardous Duty Pay	238,192	181,737	215,874	180,883
College Incentive Pay	4,075,214	4,147,183	3,921,435	3,933,354
Longevity Pay	1,267,181	1,170,524	1,315,842	1,248,212
Shift Differential	730,916	750,437	716,019	742,064
Retirement Benefits	3,127,436	3,838,729	2,597,285	3,671,237
Pension	7,678,245	7,325,970	7,474,620	7,587,570
Supplemental Pension	15,217	15,158	14,890	16,377
Social Security	156,414	49,616	145,149	50,589
Pension ARC Funding	13,164,594	14,619,305	14,619,305	15,595,760
Blue M Health Insurance	0	0	0	0
Group Life Insurance	342,153	381,017	301,630	401,543
Unemployment	397,200	271,370	271,370	196,080
Medicare	2,233,522	2,142,444	2,360,170	2,130,560
Long Term Disability	372,208	401,201	328,223	402,335
Health Insurance - Basic	1,764,954	690,729	1,876,771	769,110
Health Insurance - Premier	19,425,942	18,939,754	16,804,936	18,868,842
Other Post Employment Benefits	0	2,096,013	197,962	690,017
Salaries - Part Time/Temporary	1,834,154	2,272,328	1,794,103	2,648,738
On the Job Injury	1,528,617	1,512,358	2,088,950	1,533,054
Payroll Reserve	513,287	1,144,477	(4,160,656)	1,054,622
Attrition	0	(11,453,724)	0	(13,973,123)
Expense Recovery - Personnel	(36,306)	2,000	(3,700)	(113,000)
Benefits Adjustments	0	(493,893)	(35,652)	3,374,505
<b>Total Personnel Services</b>	<b>214,183,199</b>	<b>216,928,236</b>	<b>207,010,945</b>	<b>222,543,665</b>
<b><u>Materials and Supplies</u></b>				
City Storeroom Supplies	8,185	2,000	10,785	2,000
Facility Repair & Carpentry	18,142	81,736	114,772	112,636
City Shop Charges	3,762,324	3,649,048	3,899,890	4,175,842
City Shop Fuel	4,391,035	5,024,914	2,997,375	4,078,390
Outside Computer Services	212,274	1,588,000	3,786,068	2,189,881
City Computer Svc Equipment	63,008	70,000	12,172	375,789

## Police Services Division Detail

Category	FY 2015 Actual	FY 2016 Adopted	FY 2016 Forecast	FY 2017 Adopted
Data/Word Processing Equipment	161	9,940	710,182	0
Data/Word Process Software	1,125,746	1,829,292	2,458,730	1,933,720
City Telephone/Communications	34,141	95,753	1,962	30,000
Printing - Outside	60,552	50,000	60,296	52,500
Supplies - Outside	337,936	325,901	294,662	339,551
Clothing	1,096,287	1,362,673	1,855,163	1,375,267
Ammunition & Explosives	727,849	744,691	1,126,381	744,691
Safety Equipment	202,406	529,667	611,150	529,667
Drafting/Photo Supplies	12,732	17,012	17,484	17,012
Outside Postage	36,796	30,100	31,516	31,100
Asphalt Products	0	0	1,010	0
Materials and Supplies	591,193	542,949	630,621	567,199
Operation Police Canine	59,796	60,867	49,212	60,867
Operation Police DUI Unit	40,032	80,000	37,614	80,000
Operation Police Traffic Unit	55,602	80,000	47,044	80,000
Operation Police Mounted	60,299	69,200	69,200	69,200
Operation Police TACT	85,470	100,101	79,789	100,101
Operation Police Aircraft	553,483	671,432	576,753	671,432
Outside Vehicle Repair	30,507	30,000	57,366	55,000
Outside Equipment Repair/ Maintenance	128,831	477,837	179,771	477,837
Facilities Structure Repair - Outside	0	0	48	0
Maintenance Of Grounds	0	0	186	0
Special Investigations	682,115	427,325	407,094	427,325
Medical/Dental/Veterinary	0	394,144	0	394,144
Advertising/Publication	3,482	505,000	503,645	505,000
Outside Phone/Communications	563,257	650,000	543,872	1,073,445
Janitorial Services	192,690	198,656	172,480	198,656
Weed Control/Chemical Service	53,044	68,200	63,005	68,200
Seminars/Training/Education	46,329	73,500	54,432	68,500
Fixed Charges	1,011,330	1,250,000	858,148	1,250,000
Misc Professional Services	580,723	2,568,632	1,906,165	1,338,832
Rewards and Recognition	0	0	0	0
Administrative Fees	0	0	0	0
Travel Expense	290,286	243,500	229,229	374,808
Unreported Travel	(81,386)	0	21,610	1,533
Outside Fuel	1,284	2,400	852	2,400
Utilities	996,971	1,032,064	900,150	1,057,064
Insurance	300,264	353,506	609,198	372,480
Claims	239,430	500,000	99,330	500,000
Lawsuits	846,458	1,500,000	919,728	1,500,000
Dues/Memberships/Periodicals	7,309	12,948	1,210	6,000

## Police Services Division Detail

Category	FY 2015 Actual	FY 2016 Adopted	FY 2016 Forecast	FY 2017 Adopted
Rent	1,684,334	1,724,270	1,886,500	1,103,671
Misc Services and Charges	583,725	1,168,297	454,593	1,361,479
Expense Recovery - M & S	(1,775,407)	(1,454,172)	(232,442)	(1,614,172)
<b>Total Materials and Supplies</b>	<b>19,921,023</b>	<b>28,741,383</b>	<b>29,116,000</b>	<b>28,139,046</b>
<b><u>Capital Outlay</u></b>				
Furniture/Furnishings	5,584	0	0	84,400
Equipment	0	0	(165,166)	407,694
<b>Total Capital Outlay</b>	<b>5,584</b>	<b>0</b>	<b>(165,166)</b>	<b>492,094</b>
<b><u>Grants and Subsidies</u></b>				
Community Initiatives Grants for Non-Profits	0	0	0	150,000
Death Benefits	0	0	25,200	0
<b>Total Grants and Subsidies</b>	<b>0</b>	<b>0</b>	<b>25,200</b>	<b>150,000</b>
<b><u>Service Charges</u></b>				
Credit Card Fees - Expense	5,803	0	6,416	0
<b>Total Service Charges</b>	<b>5,803</b>	<b>0</b>	<b>6,416</b>	<b>0</b>
<b><u>Transfers Out</u></b>				
Oper Tfr Out - Debt Service Fund	4,759,419	4,807,161	4,807,161	4,625,588
<b>Total Transfers Out</b>	<b>4,759,419</b>	<b>4,807,161</b>	<b>4,807,161</b>	<b>4,625,588</b>
<b>Total Expenditures</b>	<b>238,875,028</b>	<b>250,476,779</b>	<b>240,800,555</b>	<b>255,950,394</b>
<b><u>Fines and Forfeitures</u></b>				
Court Fees	0	0	(7,500)	0
Court Costs	0	0	0	0
Fines & Forfeitures	(6,768)	(20,000)	(18,582)	(20,000)
Seizures	(108,574)	(50,000)	(138,350)	(50,000)
DUI BAC Fees	(30,567)	(2,400)	(1,231)	(2,400)
Sex Offender Registry Fees	(74,000)	(262,368)	(32,300)	(262,368)
<b>Total Fines and Forfeitures</b>	<b>(219,910)</b>	<b>(334,768)</b>	<b>(197,963)</b>	<b>(334,768)</b>
<b><u>Charges for Services</u></b>				
Wrecker & Storage Charges	(441,395)	(500,000)	(394,340)	(500,000)
Police Special Events	(589,452)	(700,000)	(165,600)	(700,000)
Tow Fees	(729,526)	(1,000,000)	(684,380)	(1,000,000)
Officers in the Schools	0	(1,475)	0	(1,475)
<b>Total Charges for Services</b>	<b>(1,760,373)</b>	<b>(2,201,475)</b>	<b>(1,244,320)</b>	<b>(2,201,475)</b>



## Police Services Division Detail

Category	FY 2015 Actual	FY 2016 Adopted	FY 2016 Forecast	FY 2017 Adopted
<b><u>Federal Grants</u></b>				
Federal Grants - Others	(1,434)	(117,197)	0	0
<b>Total Federal Grants</b>	<b>(1,434)</b>	<b>(117,197)</b>	<b>0</b>	<b>0</b>
<b><u>Other Revenues</u></b>				
Local Shared Revenue	(87,150)	(1,300,000)	(1,514,112)	(1,407,056)
Sale Of Reports	(341,096)	(259,060)	(281,864)	(259,060)
MLGW Reimbursement	(5)	0	0	0
Cash Overage/Shortage	(380)	(30)	180	(30)
Donated Revenue	0	0	0	0
Donations for Rape Kits	(5,600)	0	0	0
Miscellaneous Revenue	(93,408)	(84,450)	(451,851)	(61,368)
Recovery Of Prior Year Expense	8,880	0	1,610	0
<b>Total Other Revenues</b>	<b>(518,759)</b>	<b>(1,643,540)</b>	<b>(2,246,038)</b>	<b>(1,727,514)</b>
<b>TOTAL PROGRAM REVENUES</b>	<b>(2,500,474)</b>	<b>(4,296,980)</b>	<b>(3,688,321)</b>	<b>(4,263,757)</b>
<b>NET EXPENDITURES</b>	<b>236,374,554</b>	<b>246,179,799</b>	<b>237,112,234</b>	<b>251,686,637</b>

### Description

*Police Administration provides law enforcement leadership to meet the needs of the Memphis Police Department and the citizens of the City of Memphis. Administration, also determine and administers the policies and procedures of the Police Services Division and ensure that the division is in compliance with the laws of the State of Tennessee and the City of Memphis.*

### Operating Budget

<b>Category</b>	<b>FY 2015 Actual</b>	<b>FY 2016 Adopted</b>	<b>FY 2016 Forecast</b>	<b>FY 2017 Adopted</b>
Personnel Services	27,635,824	26,172,811	28,383,686	33,479,857
Materials and Supplies	3,565,653	5,536,468	4,591,485	5,646,298
Capital Outlay	0	0	(165,166)	0
<b>Total Expenditures</b>	<b>31,201,477</b>	<b>31,709,279</b>	<b>32,810,004</b>	<b>39,126,155</b>
Program Revenues	(99,917)	(201,197)	(114,530)	(67,974)
<b>Net Expenditures</b>	<b>31,101,560</b>	<b>31,508,082</b>	<b>32,695,475</b>	<b>39,058,182</b>
Authorized Complement				378

### Description

*Support Services provides professional and efficient services to meet the Fiscal and Human Resources operational needs of the Memphis Police Department.*

### Operating Budget

<b>Category</b>	<b>FY 2015 Actual</b>	<b>FY 2016 Adopted</b>	<b>FY 2016 Forecast</b>	<b>FY 2017 Adopted</b>
Personnel Services	18,740,464	20,665,849	19,372,195	23,797,656
Materials and Supplies	4,957,446	10,858,051	13,855,052	10,538,551
Capital Outlay	0	0	0	464,894
Service Charges	5,803	0	6,416	0
Transfers Out	4,759,419	4,807,161	4,807,161	4,625,588
<b>Total Expenditures</b>	<b>28,463,132</b>	<b>36,331,060</b>	<b>38,040,824</b>	<b>39,426,690</b>
Program Revenues	(407,374)	(1,560,560)	(2,156,180)	(1,560,560)
<b>Net Expenditures</b>	<b>28,055,758</b>	<b>34,770,500</b>	<b>35,884,644</b>	<b>37,866,130</b>
Authorized Complement				308

### Description

*To provide professional, efficient police service, improve public safety, enhance quality of life, and strengthen partnerships within the community.*

### Operating Budget

Category	FY 2015 Actual	FY 2016 Adopted	FY 2016 Forecast	FY 2017 Adopted
Personnel Services	125,928,296	131,431,973	119,305,543	122,341,135
Materials and Supplies	6,777,226	7,156,174	6,453,231	6,735,820
Capital Outlay	0	0	0	27,200
Grants and Subsidies	0	0	25,200	150,000
Total Expenditures	132,705,522	138,588,148	125,783,973	129,254,155
Program Revenues	(589,956)	(702,950)	(167,190)	(702,950)
Net Expenditures	132,115,566	137,885,198	125,616,783	128,551,205
Authorized Complement				1518

**Description**

*Investigative Services provides the traditional investigative process required of the police detective in pursuing the successful solving of crimes committed against persons and property as stated in the overall mission of the Memphis Police Services Division.*

**Operating Budget**

<b>Category</b>	<b>FY 2015 Actual</b>	<b>FY 2016 Adopted</b>	<b>FY 2016 Forecast</b>	<b>FY 2017 Adopted</b>
Personnel Services	20,277,972	19,139,204	18,885,134	19,615,829
Materials and Supplies	2,457,040	2,708,936	2,138,637	2,791,763
Capital Outlay	5,584	0	0	0
<b>Total Expenditures</b>	<b>22,740,596</b>	<b>21,848,140</b>	<b>21,023,771</b>	<b>22,407,593</b>
Program Revenues	(1,359,932)	(1,812,398)	(1,249,190)	(1,912,398)
<b>Net Expenditures</b>	<b>21,380,664</b>	<b>20,035,742</b>	<b>19,774,581</b>	<b>20,495,195</b>
Authorized Complement				247

### Description

*Special Services of Special Operations provides the Memphis Police Division with specialized support units of highly trained officers to assist in enforcing State and City ordinances and to assist in promoting a safe environment for the citizens of Memphis. This includes the following squads: Canine, Harbor, Air Support, Mounted Patrol, Tactical and Traffic Bureau.*

### Operating Budget

<b>Category</b>	<b>FY 2015 Actual</b>	<b>FY 2016 Adopted</b>	<b>FY 2016 Forecast</b>	<b>FY 2017 Adopted</b>
Personnel Services	21,600,643	19,518,398	21,064,387	23,309,187
Materials and Supplies	2,163,658	2,481,754	2,077,595	2,426,614
<b>Total Expenditures</b>	<b>23,764,301</b>	<b>22,000,153</b>	<b>23,141,983</b>	<b>25,735,801</b>
Program Revenues	(43,296)	(19,875)	(1,231)	(19,875)
<b>Net Expenditures</b>	<b>23,721,005</b>	<b>21,980,278</b>	<b>23,140,752</b>	<b>25,715,926</b>
Authorized Complement				277

# POLICE SERVICES

# AUTHORIZED COMPLEMENT

Position Title	Authorized Positions	Position Title	Authorized Positions
<u>Executive Administration</u>		CLERK GENERAL A	5
ANALYST CRIME	1	CLERK GENERAL B	14
ANALYST POLICE EMPLOYMENT	1	DISPATCHER POLICE RADIO	145
ASST ADMINISTRATIVE	1	INSTALLER COMM SAFETY EQUIP	4
CHIEF POLIC SVCS DEPUTY	6	LIEUTENANT POLICE	9
CLERK GENERAL A	6	MAJOR	2
COLONEL LIEUTENANT	12	MGR COMMUNICATIONS POLICE	1
COLONEL POLICE	1	MGR CRIME ANALYSIS	1
COORD TRAINING PSYCH	1	MGR RADIO MAINT	1
DIRECTOR POLICE SVCS	1	OFFICER POLICE II	30
DIRECTOR POLICE SVCS DEPUTY	1	OPER DIGITAL PRESS	1
GUNSMITH FIREARMS INST	1	SERGEANT	4
LIEUTENANT POLICE	27	SPEC PERSONNEL PAYROLL	1
MAJOR	5	SPEC POLICE PAYROLL	7
MGR GRANTS POLICE	1	SPEC PROCUREMENT	1
MGR SUPPORT SVCS POLICE	1	SUPER CENTRAL RECORDS	1
NURSE OCCUPATIONAL HEALTH	1	SUPER FLEET MAINT	1
OFFICER POLICE II	201	SUPER MATERIAL PUB	1
SECRETARY	8	SUPER PHOTO GRAPHIC ARTS	1
SERGEANT	47	SUPER POLICE PAYROLL	1
RECRUIT POLICE	51	SUPER POLICE PERSONNEL	1
SPEC GRANT ADMIN	2	SUPER PROPERTY EVID SHIFT	6
TRANSCRIPTIONIST	2	SUPER RADIO DISPATCH	17
<b>Total Executive Administration</b>	<b>378</b>	SUPER RADIO MAINT	3
		TECH PHOTO LAB	2
<u>Administration Services</u>		TECH POLICE RADIO	7
ACCOUNTANT ASSOCIATE A	1	TECH POLICE RADIO LO	1
ADMR DATABASE POLICE	1	<b>Total Administration Services</b>	<b>308</b>
ADMR POLICE FINANCE	1		
ANALYST CRIME	5	<u>Uniform Patrol</u>	
ANALYST CRIME SR	4	CLERK GENERAL A	18
ANALYST FINANCIAL POLICE SR	3	CLERK GENERAL B	7
ANALYST PERSONNEL POLICE	1	CLERK INVENT CONTROL	18
ANALYST PERSONNEL POLICE SR	1	COLONEL LIEUTENANT	10
ANALYST PROGRAMMER	1	COLONEL POLICE	9
ANALYST SYSTEM SOFTWARE LD	2	LIEUTENANT POLICE	121
ARTIST COMPOSITE	1	MAJOR	29
ATTENDANT PROPERTY ROOM	18	MANAGER NEIGHBORHOOD WATCH	1
CHIEF DEPUTY	1	OFFICER POLICE II	1133



**POLICE SERVICES**

**AUTHORIZED COMPLEMENT**

Position Title	Authorized Positions	Position Title	Authorized Positions
OFFICER POLICE II PROB	104	COLONEL POLICE	1
OFFICER POLICE LEP II	1	COORD SCHOOL CROSSING GUARD	1
OFFICER POLICE TACT	2	LIEUTENANT POLICE	30
SECRETARY	8	LIEUTENANT POLICE TACT	3
SERGEANT	46	MAJOR	6
SPECIALIST CUSTOMER	1	MAJOR TACT	1
SUPER ARREST DATA ENTRY	1	MECH HELICOPTER LEAD FT	1
SUPER CLERICAL OPER	6	OFFICER POLICE II	142
TRANSCRIPTIONIST	2	OFFICER POLICE TACT	21
TECH PARKING ENFORCEMENT	1	PILOT HELICOPTER	3
<b>Total Uniform Patrol</b>	<b>1518</b>	PST	30
<i>Police Crimes</i>		SECRETARY	1
ANALYST CRIME	1	SERGEANT	32
CLERK GENERAL A	4	SUPER AVIATION SHOP	1
CLERK GENERAL B	1	<b>Total Special Operations</b>	<b>277</b>
COLONEL LIEUTENANT	1	<b><u>TOTAL POLICE SERVICES</u></b>	<b><u>2728</u></b>
COLONEL POLICE	1		
COUNSELOR FAMILY TROUBLE CTR	2		
CRIMINALIST	1		
EXAMINER LATENT PRINT	5		
LIEUTENANT POLICE	24		
MAJOR	7		
MGR FLEET SVCS	1		
MGR VEHICLE STORAGE OPERATION	1		
OFFICER POLICE II	31		
REP VEHICLE STORAGE SVC	23		
SECRETARY	2		
SERGEANT	131		
SPEC INVESTIGATIVE PROC A	1		
SPEC INVESTIGATIVE PROC B	1		
SUPER SHIFT AUCTION LEAD	2		
SUPER VEHICLE STORAGE SVC	4		
TRANSCRIPTIONIST	3		
<b>Total Investigative Services</b>	<b>247</b>		
<i>Special Operations</i>			
CLERK GENERAL A	3		
COLONEL LIEUTENANT	1		

